

Texas

Set play (5)

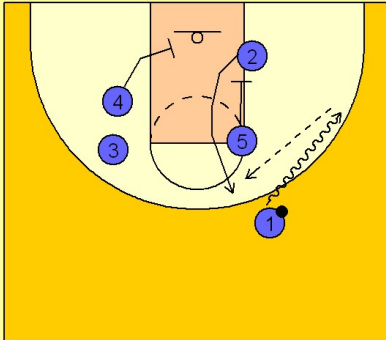
1

Texas Set Play vs. Man

Box set to begin. #1 dribbles to the right side of the floor. #5 down screens for #2 bringing him up to the top of the key.

#4 moves down in the lane to set a screen.

#1 passes to #2 on top.

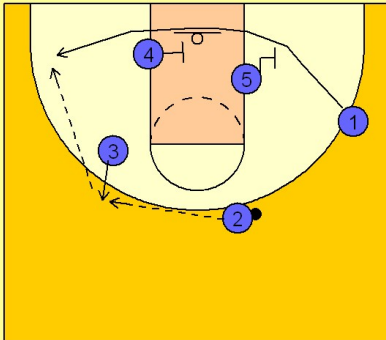


2

Texas Set Play vs. Man

#2 reverses the ball to #3 on top.

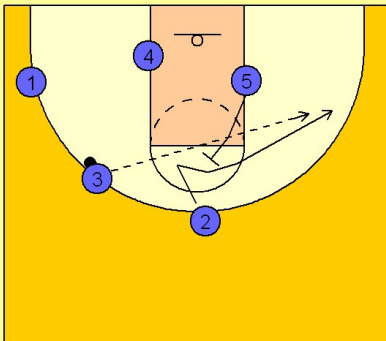
#3 looks for #1 coming off of two screens along the baseline, first from #5 then #4. He will hit him in the corner if he is open off of the screens.



3

Texas Set Play vs. Man

If he does not have a good shot opportunity, #3 will look to hit #2 using a back screen from #5 and fades to the back side wing area.



Texas Set play (5)

4

Texas Set Play vs. Man

If that is not available, #5 steps out after back screening and receives a pass from #3. #3 then cuts over the top of #5 looking for a hand off and drive to the basket.

#5 could also step out and ball screen for #3 in this position.

