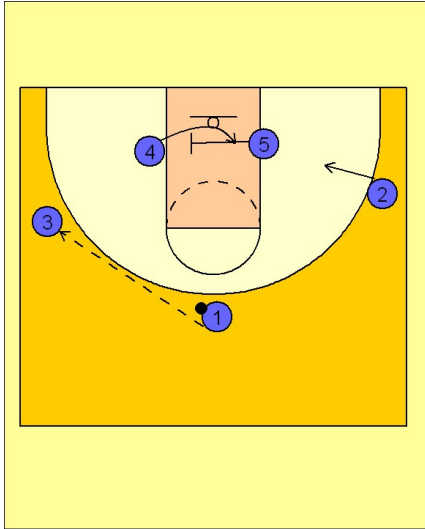


# Texas

## Set play vs. zone (1)

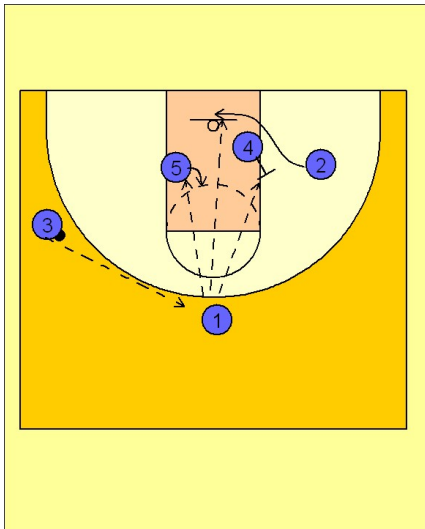
1



Texas Set Play vs. Zone Defense

#1 passes to #3 on the left side. #5 back screens for #4. #2 starts to move into the lane.

2



Texas Set Play vs. Zone Defense

#3 passes back to #1 on top. #4 comes across the lane and sets a back screen on the low defender on the right side. #5 moves into the middle and occupies the middle defender. #2 sneaks behind the defense looking for the lob pass from #1.

If #2 is not open, #5 and #4 pin and seal hard in the post looking for the pass from #1.