

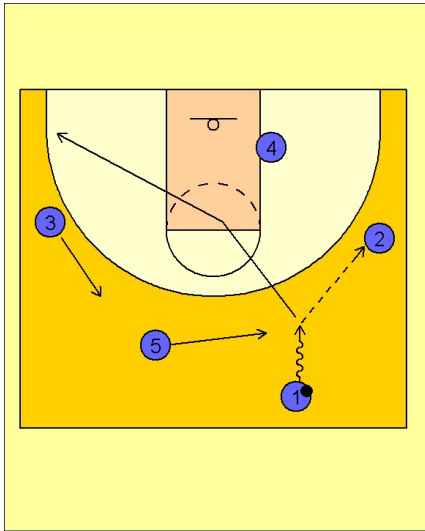
# Ucla

## Early offense (1)

1

### UCLA Early Offense

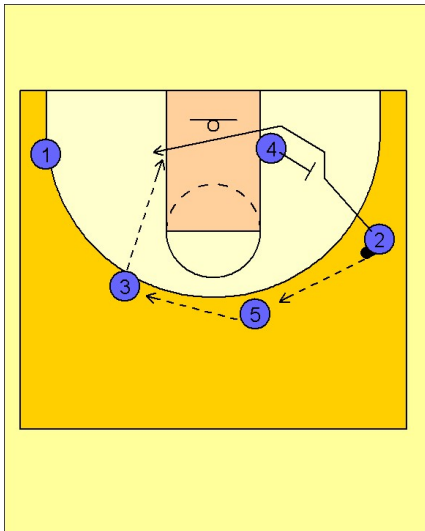
#1 takes the ball up the right sideline and makes the entry pass to #2 on the right wing. #1 cuts through the lane and out to the opposite corner area. #5 slides over and #3 moves up.



2

### UCLA Early Offense

#2 reverses the ball to #5 on top who passes to #3. #4 sets a back screen for #2 who cuts across the lane looking for a post entry pass from #3.



3

### UCLA Early Offense

If #2 does not receive the ball he immediately turns around and receives a double staggered screen from #4 and #5 looking for the open jump shot on the right wing area.

