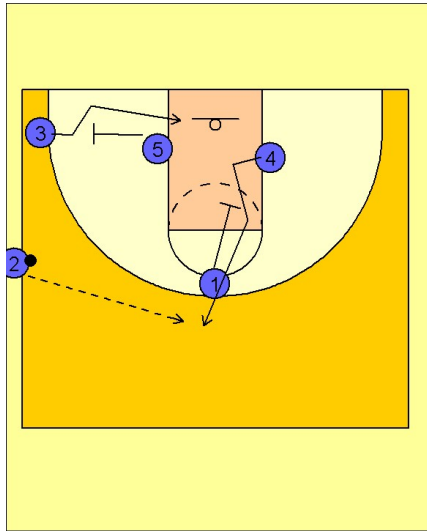


Ucla

Ob side-out (1)

1

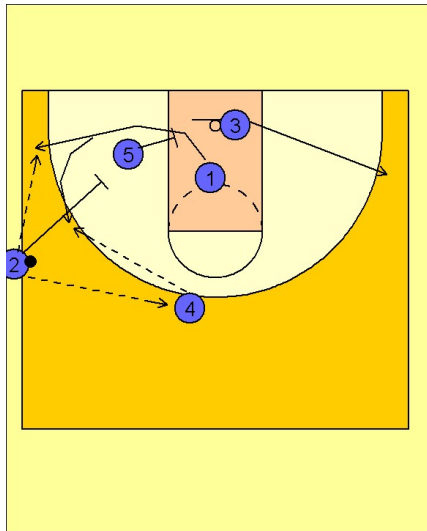


UCLA Side-Out

#5 sets a back screen for #3 in the left corner area while #1 sets a down screen for #4 in the lane.

#2 will look to hit #4 on top if he is open.

2



UCLA Side-Out

If #4 receives the pass, #2 will step in and set a double staggered screen with #5 for #1, looking to free him for an open jumper on the wing.

If #4 did not get the ball, #1 would break off the single screen from #5 looking to get open in the corner for the shot and receive the pass directly from #2.