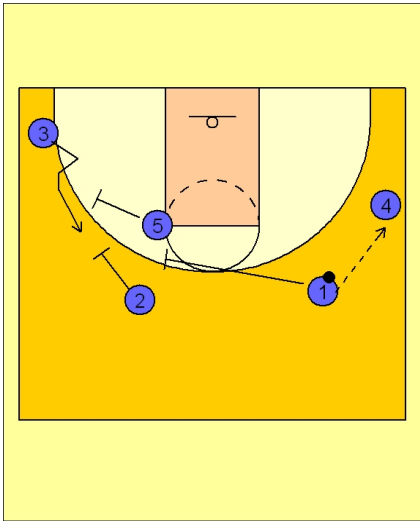




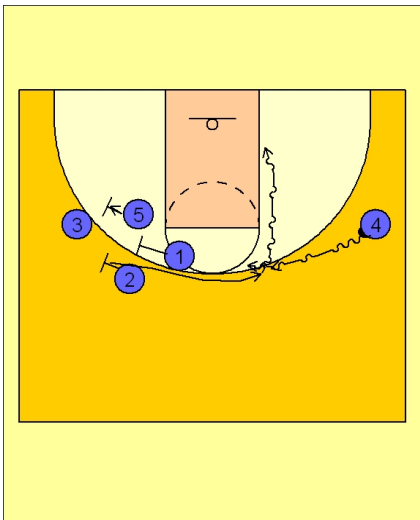
### Quick hitter (10)



#### UCLA Quick Hitter vs. Man Defense

#1 enters the ball to #4 on the right wing.

#5, #2 and #1 set a triple screen for #3 on the left corner.



#### UCLA Quick Hitter vs. Man Defense

#4 starts to dribble the ball to the top.

As the triple screen begins, #2 fakes the screen and cuts back to receive a dribble hand-off from #4.

#2 then takes the ball and attacks the rim on the dribble.