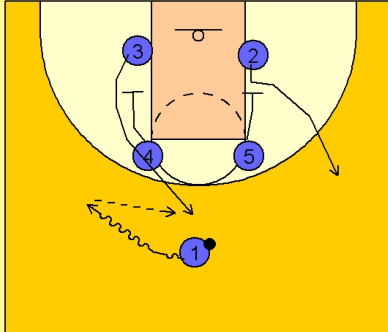
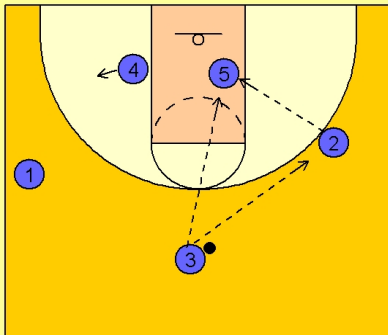


**Quick hitter (12)****UCLA Quick Hitter vs. Man Defense**

Box set to begin.

Play starts with #1 driving to the left wing while #4 screens down for #3. #3 cuts to the top. #5 delays his screen for a second and then down screens for #2.

#1 passes to #3 on top.

**UCLA Quick Hitter vs. Man Defense**

On the catch, #5 is sealing inside looking for the post entry pass from on top. #3 could also pass to #2 on the wing to get the ball inside.

#4 can step outside the lane a few feet just in case his man helps on the post action. #4 could catch and attack the rim or shoot the short jump shot.