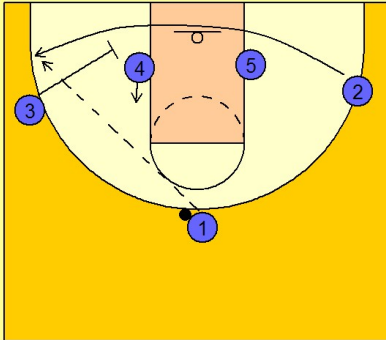


Ucla

Quick hitter (4)

1

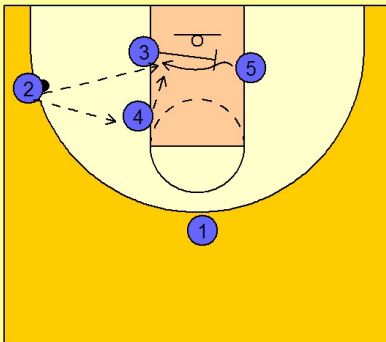
UCLA Quick Hitter vs. Man Defense



#3 moves down and sets a screen for #2 cutting across the baseline and out to the left wing / corner area. #4 moves up the lane a bit to allow the screening action to take place.

2

UCLA Quick Hitter vs. Man Defense



As soon as #2 catches the ball, #3 continues his movement into the lane and sets a cross screen for #5 in the lane. #4 moves up the lane looking for post position and a possible mid to high post entry pass.