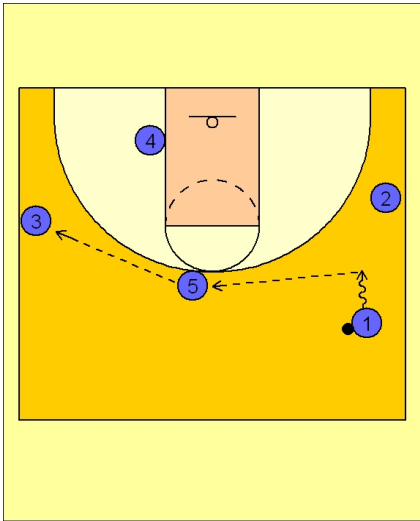


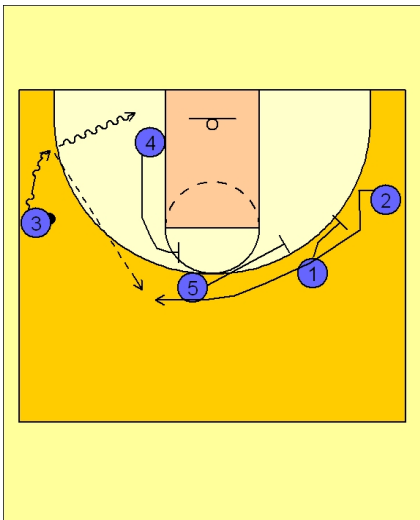


### Set play (16)



#### UCLA Set Play vs. Man Defense

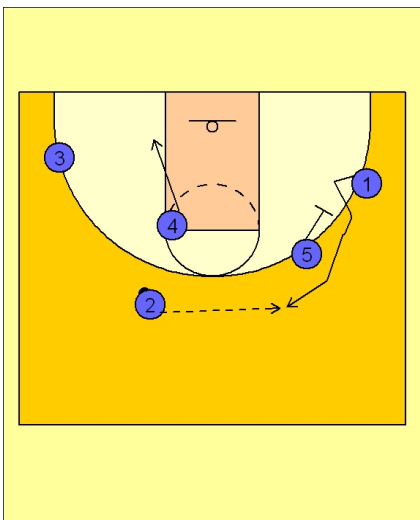
#1 brings the ball up the sideline and reverses the ball to #5 on top who passes to #3 on the left wing.



#### UCLA Set Play vs. Man Defense

#3 starts to drive the ball down to the left corner area while #1, #5 and #4 set a triple staggered screen for #2 on the right wing.

#3 has the option to take the ball to the basket.



#### UCLA Set Play vs. Man Defense

If #2 receives the pass, #5 screens for #1 on the right wing.