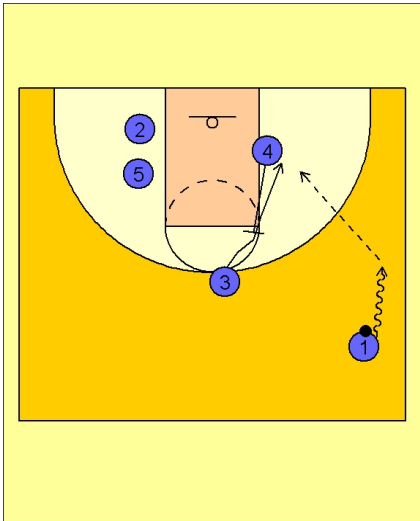




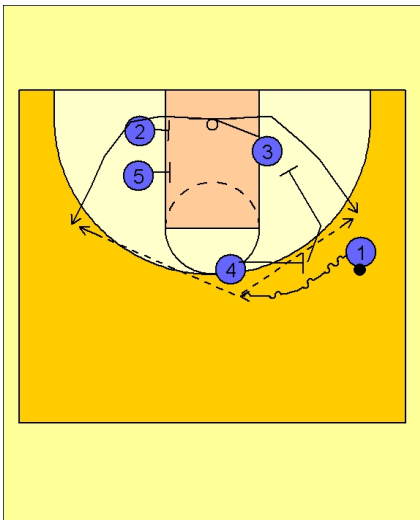
Set play (17)



UCLA Set Play vs. Man Defense

#1 brings the ball up the sideline.

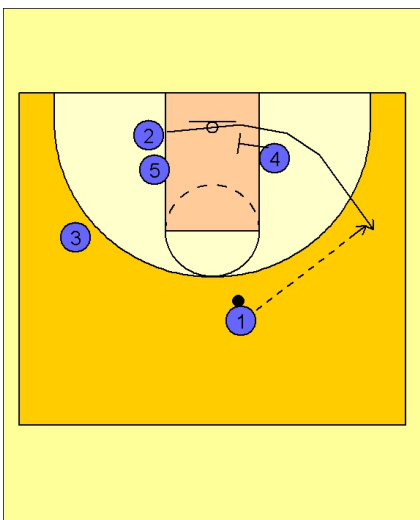
#4 sets a backscreen for #3 on top. #3 cuts to the ballside low block. If #3 is open, #1 looks to enter the ball to #3 on the blocks.



UCLA Set Play vs. Man Defense

Once #3 gets to the blocks, #4 steps out and sets a ball screen for #1 on the right wing.

As #1 comes off the ball screen, #3 cuts under the basket and uses either the double screen on the left side from #2 and #5, or cuts back to the right side of the single screen from #4.



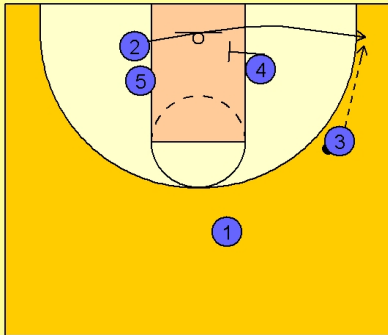
UCLA Set Play vs. Man Defense

If #3 cuts out to the opposite side of the ball, #2 cuts off the single screen from #4 on the right low block.



UCLA Set Play vs. Man Defense

If #3 cuts to the right side off the single screen and receives the ball, #4 will then screen for #2 to get open in the right corner.



UCLA Set Play vs. Man Defense

#4 continues his cut across the lane and screens for #5. #2 will look inside to #5.

