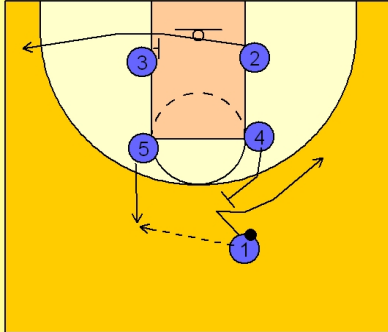


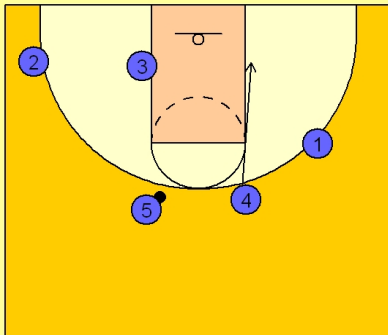
**Set play (18)****UCLA Set Play vs. Man Defense**

Box set to begin.

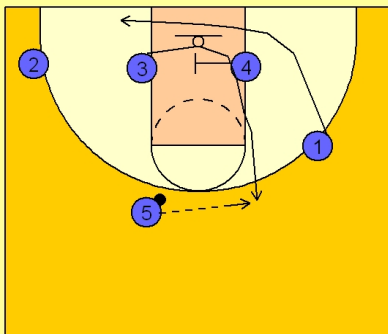
#5 steps out to receive the entry pass from #1.

After passing, #4 sets a back screen for #1. #1 fades to the right wing off the back screen.

While this is happening, #3 is screening for #2 who breaks out to the left corner.

**UCLA Set Play vs. Man Defense**

#4 breaks to the right low block.

**UCLA Set Play vs. Man Defense**

#1 clears out while #4 screens across the lane for #3 who cuts across and out to the top for the open 3-point shot.