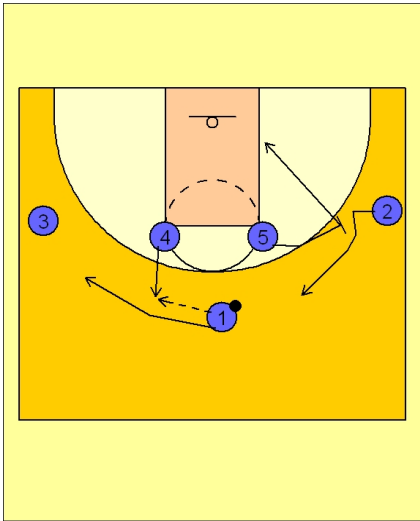


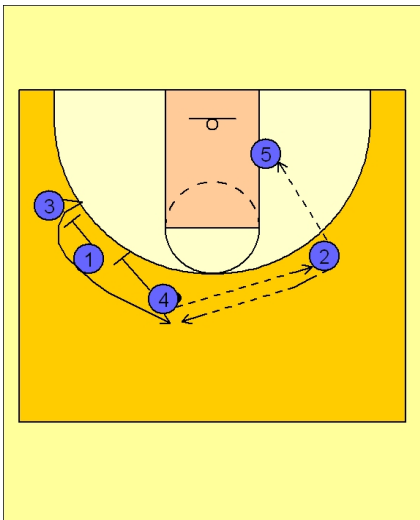
**Set play (19)****UCLA Set Play vs. Man Defense**

1 - 4 High to begin.

#4 steps out to receive the entry pass from #4.

As #4 catches the ball, #1 cuts to the left wing area while #5 screens for #2 on the right wing.

#5 cuts to the block after #2 cuts to the top off his screen.

**UCLA Set Play vs. Man Defense**

Once #2 has the ball, #1 and #4 set a double staggered screen for #3 on the left wing.

#2 may also look to feed the ball inside to #5, who is isolated on the blocks as the other defenders are being occupied with the double staggered screen action.