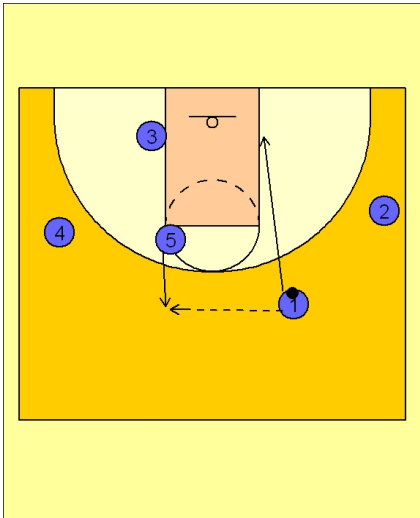




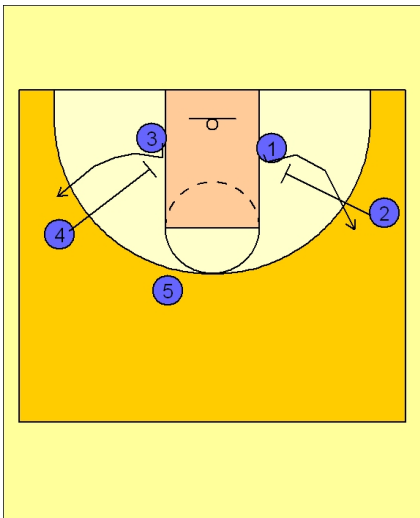
Set play (21)



UCLA Set Play vs. Man Defense

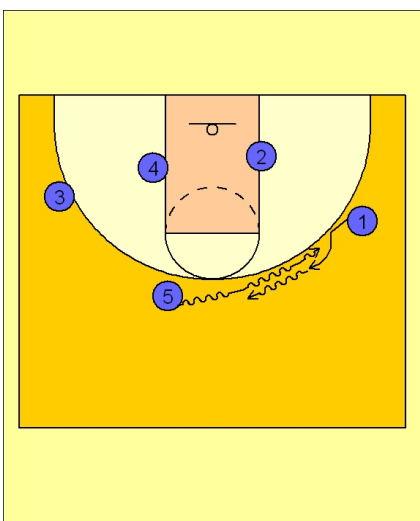
#5 steps out and receives the entry pass from #1.

#1 cuts to the right low block area.



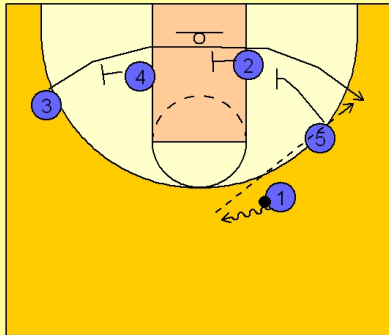
UCLA Set Play vs. Man Defense

Once #5 has the ball, #4 and #2 sets a down screen for #3 and #1.



UCLA Set Play vs. Man Defense

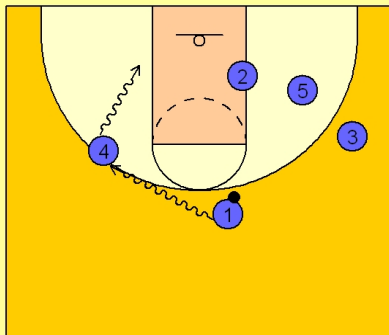
As the down screen is taking place, #5 starts to dribble to a side. Here we see him dribbling at #1 on the right wing. #1 takes the hand-off from #5.

**UCLA Set Play vs. Man Defense**

#1 takes the hand-off and dribbles to the top of the key area.

While this is happening, #3 uses a triple staggered screen from #4, #2 and #5.

#1 will look to hit #3 on the right wing if he gets open on the triple screen.

UCLA Set Play vs. Man Defense

After screening for #3, #4 will step out to the left freethrow line area / wing to receive the pass from #1.

#4 will look to attack the basket if the opportunity presents itself.