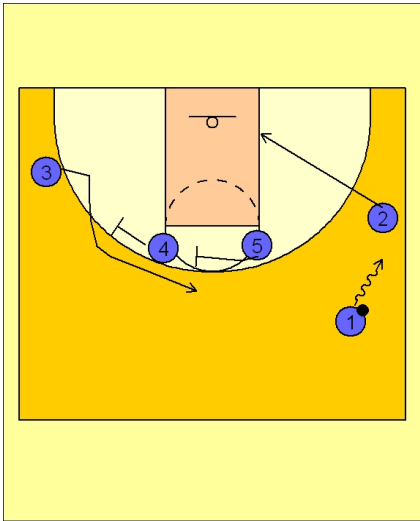
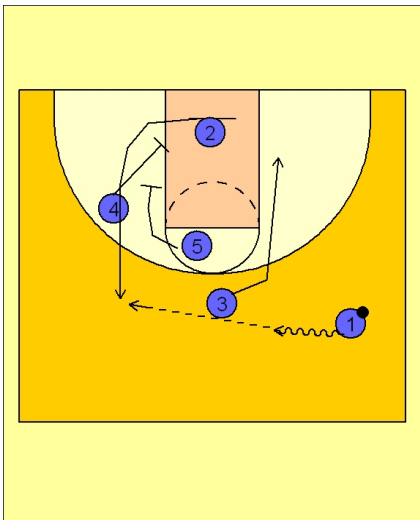


**Set play (22)****UCLA Set Play vs. Man Defense**

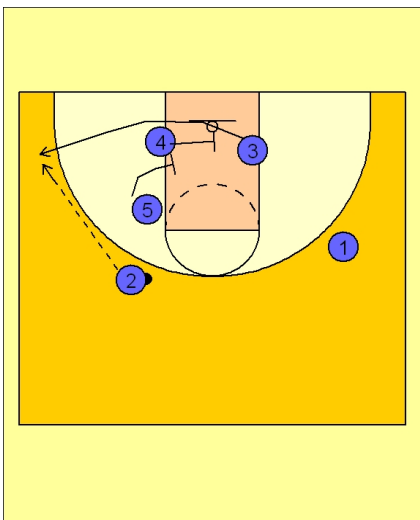
#1 drives up to the right wing. #2 cuts down to the right low block.

As this is happening, #4 and #5 sets a double staggered screen for #3 on the left wing.

**UCLA Set Play vs. Man Defense**

If #3 does not get open for the shot, #3 curls down to the right low block area.

As this is happening, #4 and #5 set a double staggered screen for #2 who breaks up to the top for an open shot.

**UCLA Set Play vs. Man Defense**

If #2 does not get a shot, #4 and #5 now set a double staggered screen in the lane for #3 who breaks out to the left corner area for the open shot.