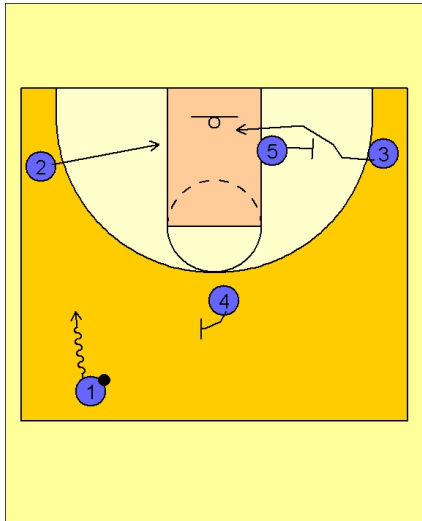


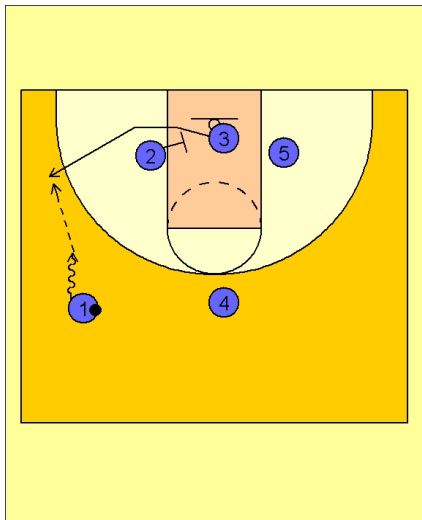


Set play (23)



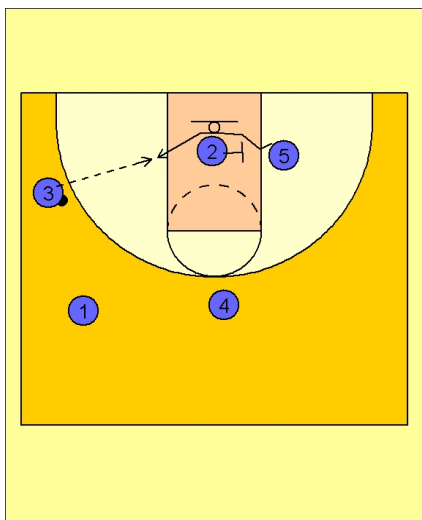
UCLA Set Play vs. Man Defense

As #1 is driving the ball up the sideline, #2 cuts to the ballside block while #5 steps out and screens for #3 on the opposite baseline.



UCLA Set Play vs. Man Defense

#2 now screens under the basket for #3 while #1 makes the entry pass to #3 in the corner / wing area.



UCLA Set Play vs. Man Defense

#2 continues his cut across the lane and screens for #5.

#3 looks to make the entry pass to #5 on the low block.



UCLA Set Play vs. Man Defense

After screening, #1 and #4 set a double screen for #2, who breaks to the top of the key looking for the open 3 point shot.

