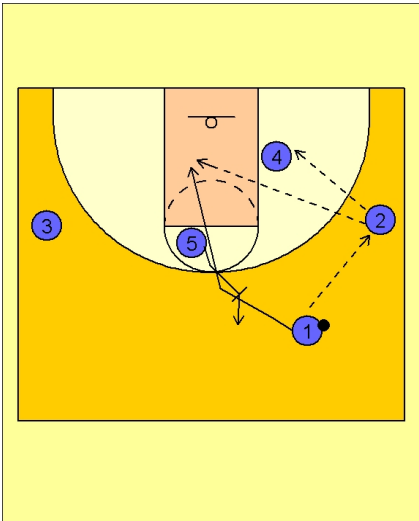




Set play (24)



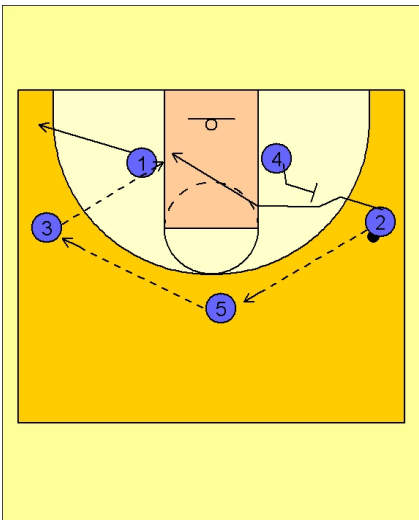
UCLA Set Play vs. Man Defense

#1 enters to #2 on the right wing. #2 will look quickly into #4 isolated in the low post.

As soon as #1 passed to #2, #5 would step out and back screen for #1.

#1 cuts to the basket. #2 will look to make the lob pass to #1 if he is open.

#5 screens and steps out.



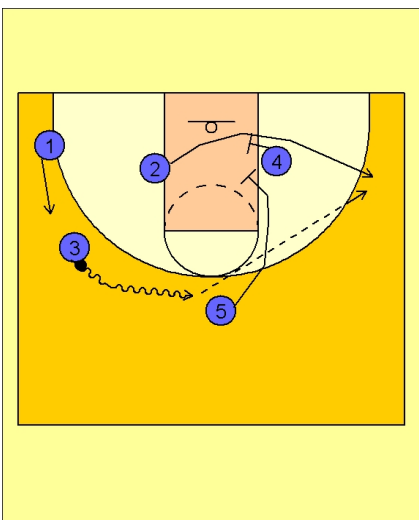
UCLA Set Play vs. Man Defense

#2 reverses the ball to #5 on top.

#4 steps out and sets a back screen for #2.

#2 cuts across the lane while #5 reverses the ball to #3 on the left wing.

#3 looks inside to #2.



UCLA Set Play vs. Man Defense

If #2 is not open, #3 drives the ball to the top of the key while #2 runs off a double screen from #4 and #5.