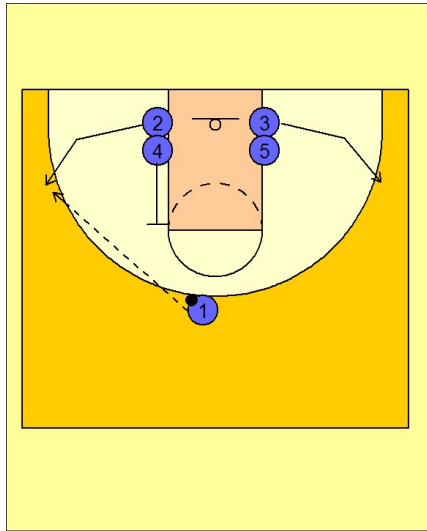


Ucla

Set play (1)

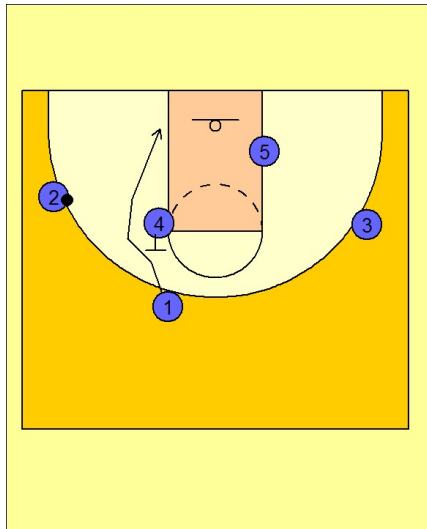
1



UCLA Set Play

(#2) and (#3) cut to the wings. (#1) enters to the wing man (#2). (#4) flashes to the high post.

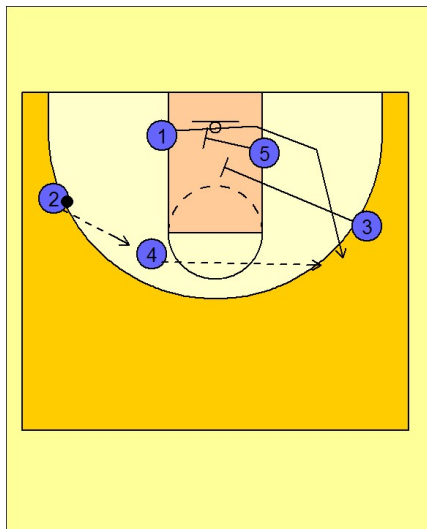
2



UCLA Set Play

(#4) sets a back screen for the "UCLA cut" to the basket by (#1).

3



UCLA Set Play

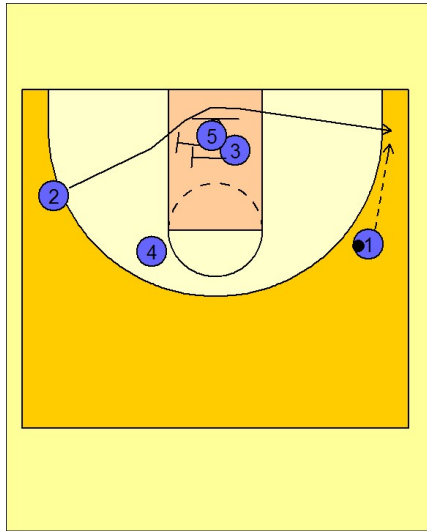
(#2) hits (#4) stepping out after the back screen. (#5 and #3) set a double screen for (#1) in the lane.

(#4) reverses the ball to (#1) if he is open for the shot.

Ucla

Set play (1)

4



UCLA Set Play

(#2) then receives a double screen from (#3 and #5) in the paint trying to free him for a shot in the corner.