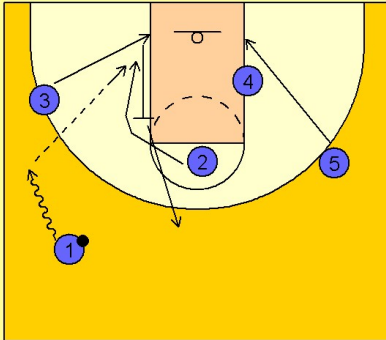


Ucla

Set play (10)

1

UCLA Set Play vs. Man Defense

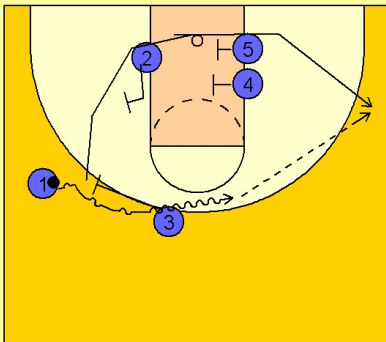


#1 takes the ball on the dribble down to the left wing area. As this is happening, #3 cuts down to the ball side low block and then back screens for #2 cutting to the block. #4 and #5 are setting up for a double screen on the right low block.

#1's first look is inside to #2.

2

UCLA Set Play vs. Man Defense



#3, after back screening for #2, comes over and sets a ball screen for #1 on the left wing. #1 has kept his dribble alive in order to execute this screen and roll with #3.

As #1 comes over the top of the screen, #3 rolls underneath the basket coming off a single screen from #2 and then a double screen from #4 and #5 trying to get open on the right wing for the shot.