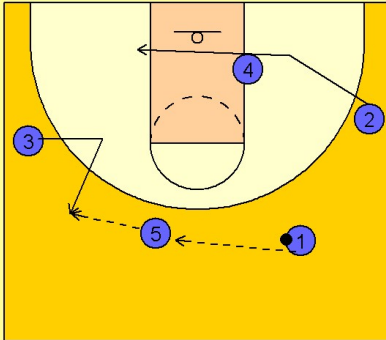


Ucla

Set play (11)

1

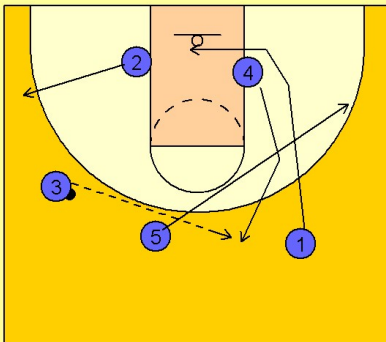
UCLA Set Play vs. Man Defense



#1 passes the ball to #5 on top who passes to #3 on the left top wing area. As these passes are being made, #2 is cutting across the lane to the ball side low block.

2

UCLA Set Play vs. Man Defense

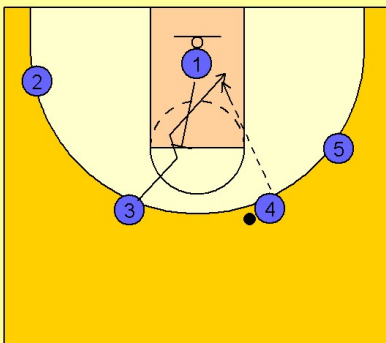


After #5 passed to #3 he cuts away to the right wing, #1 cuts down to underneath the basket and #4 breaks up to receive the pass on top.

#2 pops out to the left wing area on ball reversal.

3

UCLA Set Play vs. Man Defense

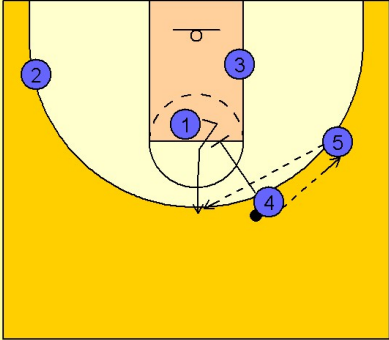


#1 now quickly back screens for #3 who is cutting to the hoop looking for the pass from #3.

Ucla
Set play (11)

4

UCLA Set Play vs. Man Defense



If #3 does not receive the pass, #4 passes to #5 on the right wing and down screens for #1, trying to free him for an open jumper at the top of the key area.