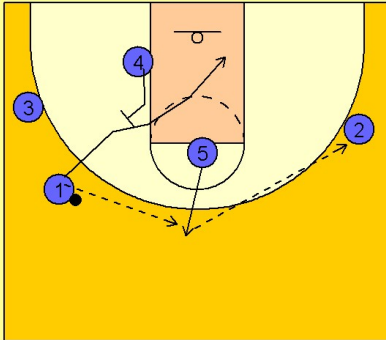


Ucla

Set play (12)

1

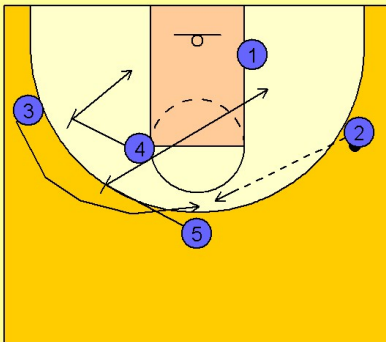
UCLA Set Play vs. Man Defense



#1 passes to #5 stepping out to the top of the key area. #5 then passes the ball to #2 on the right wing. As this is happening, #4 has slid up the lane and sets a diagonal back screen for #1 who cuts over the top and through the lane to the right low block.

2

UCLA Set Play vs. Man Defense

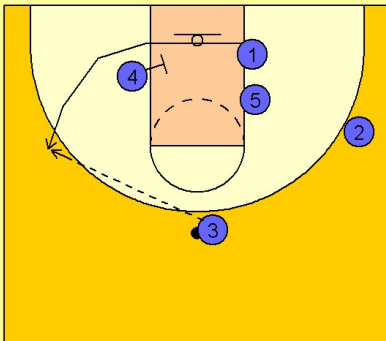


#4 and #5 then set a double screen away for #3 who comes to the top of the key looking for the open jump shot.

As #3 comes off the screens, #5 cuts to the right low block looking for the ball while #4 cuts to the left low block.

3

UCLA Set Play vs. Man Defense



Once #3 has the ball, #1 cuts back off the screen on the left low block looking for the open jump shot on the left wing.