

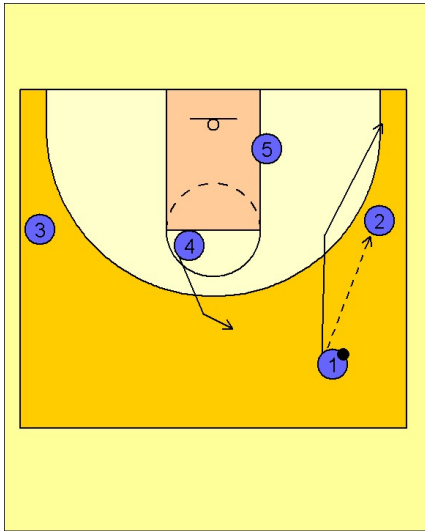
# Ucla

## Set play (13)

1

UCLA Set Play vs. Man Defense

#1 enters to #2 on the right wing and cuts to the ball side corner. #4 steps out to the top of the key area.

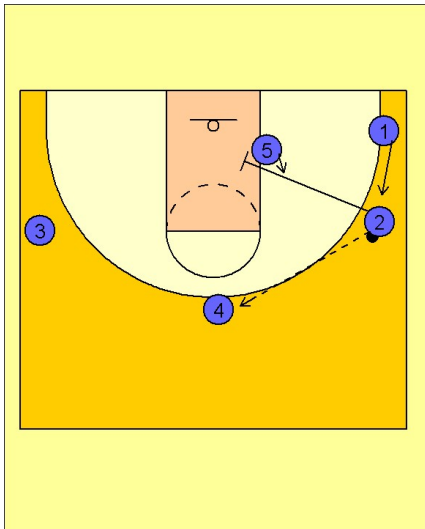


2

UCLA Set Play vs. Man Defense

#2 passes the ball to #4 on top and then cuts into the lane and sets a screen on the post defender guarding #5. #5 steps up the block and looking for the next pass and post entry.

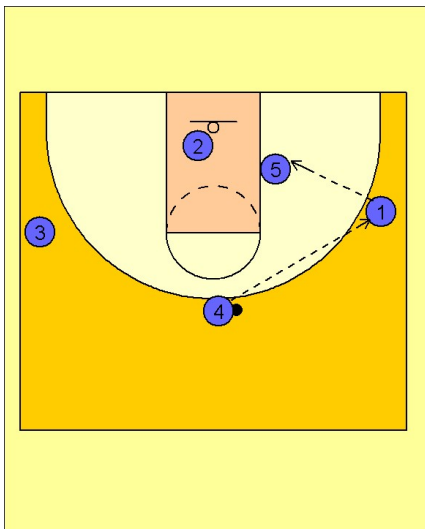
As #2 cuts down, #1 is stepping up in the open wing area just vacated by #2.



3

UCLA Set Play vs. Man Defense

#4 quickly passes to #1 on the right wing who looks to feed #5 on the right low block with good low post position.



Ucla  
Set play (13)

4

## UCLA Set Play vs. Man Defense

If #5 is not open, #3 and #4 set a double down screen for #2, trying to free him for an open jumper on top.

