

Ucla

Set play (14)

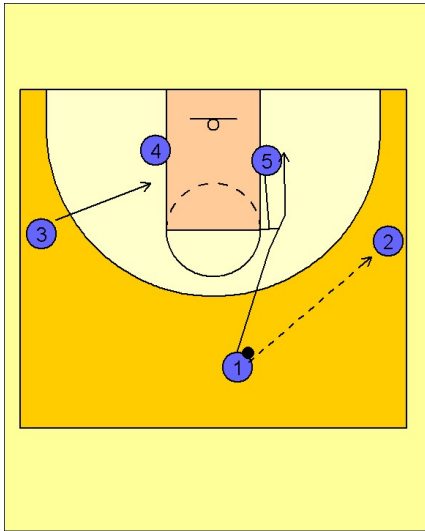
1

UCLA Set Play vs. Man Defense

This set is as old as the hills, but some of you want to see what your favorite coaches and teams are using, so here it is....

#1 enters the ball to #2 on the right wing and cuts through off the back screen to the right low block. This action, fittingly in this case, is called the "UCLA screen".

#3 moves down for the upcoming double screen with #4 on the left low block area.



2

UCLA Set Play vs. Man Defense

#5 then sets a ball screen for #2. While #2 and #5 execute the pick and roll, #1 is coming off the double screen from #4 and #3 on the right side of the floor.

#2 can look to score himself off the ball screen or hit #5 rolling or #1 coming off the double screen.

