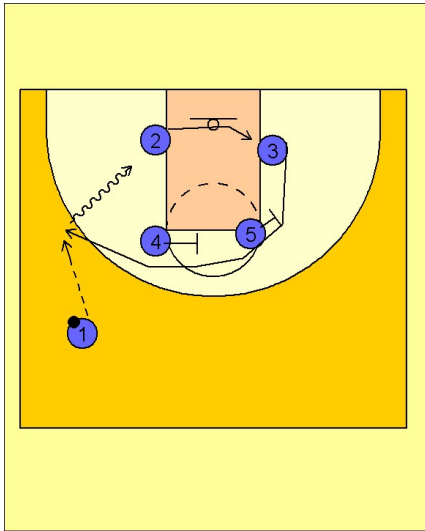


Ucla

Set play (15)

1



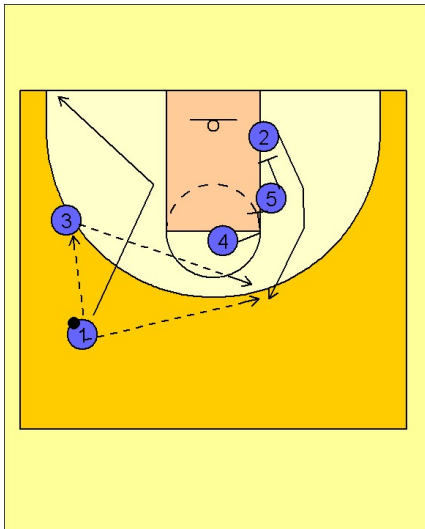
UCLA Set Play vs. Man Defense

Box set to begin.

#4 and #5 move to the right side a bit to set a double staggered screen for #3. As this is happening, #2 is sliding over to the right low block area.

If #3 is open he will receive the ball from #1 and can look to shoot the open jumper or attack the cleared out lane area.

2



UCLA Set Play vs. Man Defense

If #3 is not open, #4 and #5 continue screening for #2 who comes off the double screen for the open jumper on top.

The ball can be passed to #2 from either #1 or #3.

If #3 received the initial pass, #1 could help in the screening action with #4 and #5 or cut to the basket.