

Ucla

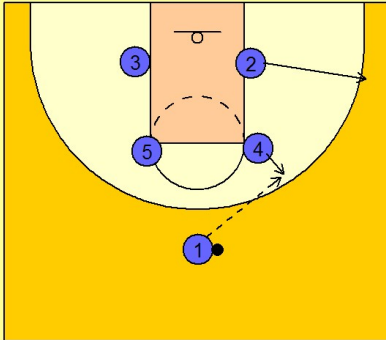
Set play (4)

1

UCLA Set Play vs. Man

Box set to begin.

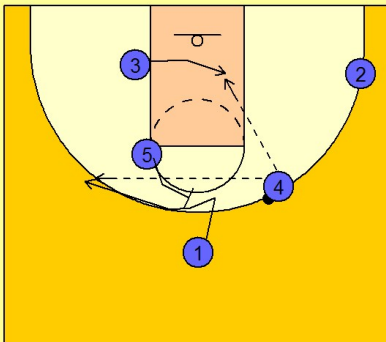
#4 steps out to receive the entry pass from #1. #2 breaks out to the ball side wing / corner area.



2

UCLA Set Play vs. Man

Once #4 receives the ball he will look for either #3 stepping across the lane for the isolated post up or #1 fading to the back side of the back screen from #5.



3

UCLA Set Play vs. Man

If #3 is not open on the block, #4 will hit #1.

#1 can then look to drive on the cleared out back side of the floor or he can look for #3 coming off a double screen from #4 and #5.

#2 can also cut along the baseline behind the defense for a pass from #1.

