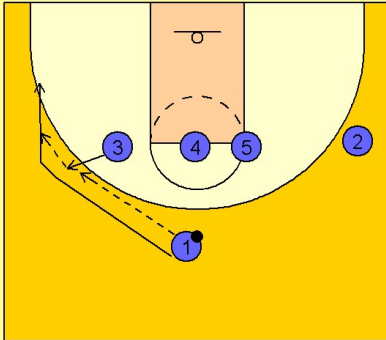


Ucla

Set play (6)

1

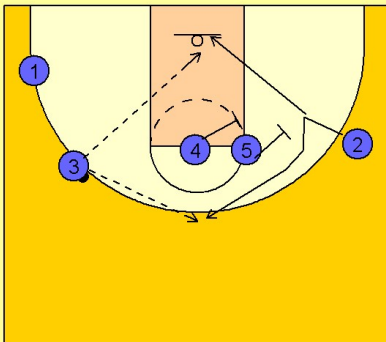
UCLA Set Play vs. Man Defense



#3 pops out to receive the pass from #1. #1 cuts over the top of #3 looking to receive a pass if he is open. #1 would then have a driving opportunity.

2

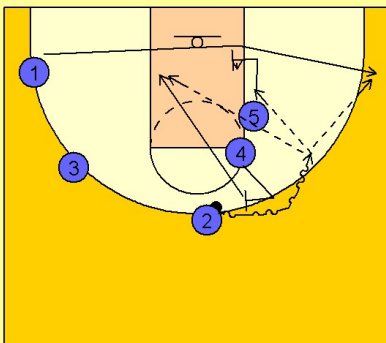
UCLA Set Play vs. Man Defense



If #1 is not open, #3 will look for #2 coming off the double screen from #4 and #5. #2 can either fake low and break high over the screen or fake high and cut low looking for the back door pass from #3.

3

UCLA Set Play vs. Man Defense



If #2 gets the ball on top, the top man in the double screen, #4 will set a ball screen for #2 on top while #5 slides down and sets a single screen for #1 on the baseline.

#2 can look to drive and score off the ball screen from #4, or he can hit #1 in the right corner / wing area or hit #5 inside posting up after screening or he can hit #4 rolling to the basket.