

Ucla

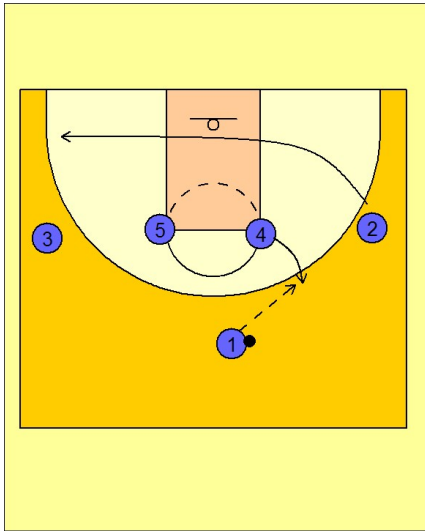
Set play (7)

1

UCLA Set Play vs. Man Defense

1 - 4 high to begin.

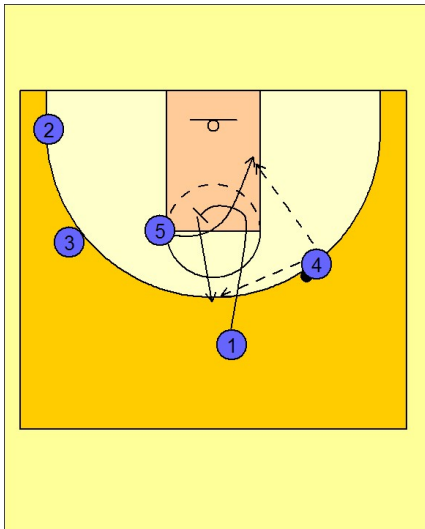
#4 steps out and receives the entry pass from #1. #2 cuts away to the opposite corner area.



2

UCLA Set Play vs. Man Defense

After passing to #4, #1 cuts toward the basket. He slows up at the FT line to set a back screen for #5. #5 comes over the top of the screen looking for the post entry pass from #4. If #5 is not open, #4 will pass the ball to #1 on top, who has popped out after screening for #5.



3

UCLA Set Play vs. Man Defense

When #1 receives the ball, #5 and #4 move into the lane to set a screen for #3 who breaks out to the right wing / corner area looking for the open jumper and pass from #1.

