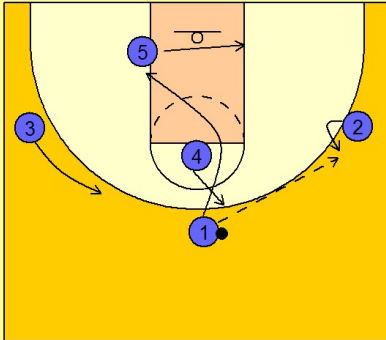


Ucla

Set play (8)

1

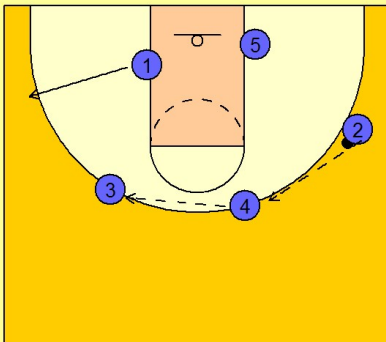
UCLA Set Play vs. Man Defense



#1 enters to #2 on the right wing. #5 follows the ball to the low block area. #4 steps out to the perimeter while #1 cuts through the lane to the opposite low block. #3 moves up for better spacing on the perimeter.

2

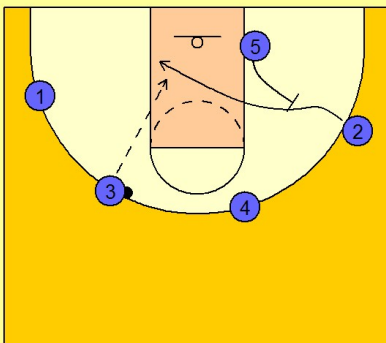
UCLA Set Play vs. Man Defense



#2 reverses the ball to #4 on top who swings it over to #3. #1 pops out to the left wing area.

3

UCLA Set Play vs. Man Defense

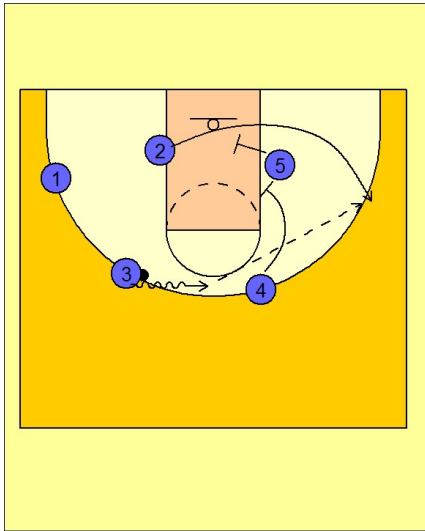


Once #3 has the ball, #5 steps out and sets a back screen for #2. #2 cuts over the top of the screen looking for the pass from #3.

Ucla
Set play (8)

4

UCLA Set Play vs. Man Defense



If #2 is not open, #3 takes the ball on the dribble to the right side while #2 turns around and comes out to the same side he started off of a double staggered screen from #5 and #4.