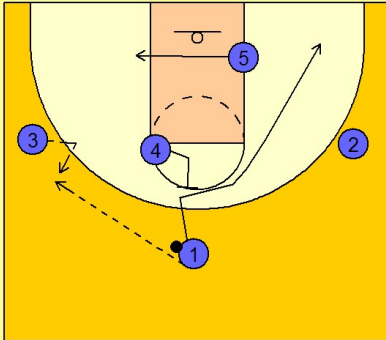


Ucla

Set play (9)

1

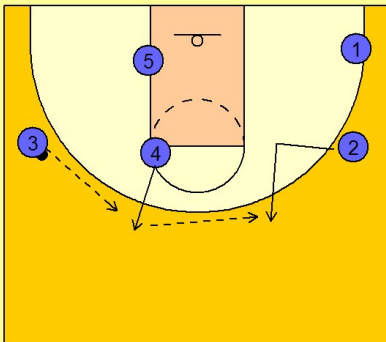
UCLA Set Play vs. Man Defense



#1 enters to #3 on the left wing and cuts through the lane and out to the right corner off of a back screen from #4. #5 follows the ball to the left low block.

2

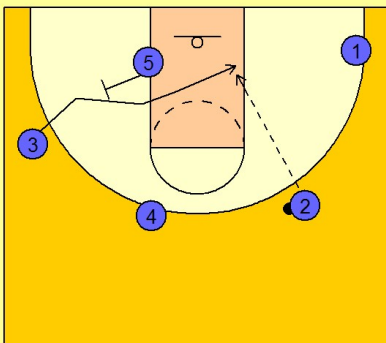
UCLA Set Play vs. Man Defense



#4 then steps out to receive the reverse pass from #3. #4 then pass over to #2 who has broken in and then out to receive the pass.

3

UCLA Set Play vs. Man Defense



As the ball is reversed, #5 back screens for #3 who cuts across the lane. #2 can hit #3 if he is open.

Ucla

Set play (9)

4

UCLA Set Play vs. Man Defense

If #3 is not open on the cut, #2 takes the ball across the top while #5 and #4 set a double or double staggered screen for #3 breaking out to the left wing area for the open jump shot.

