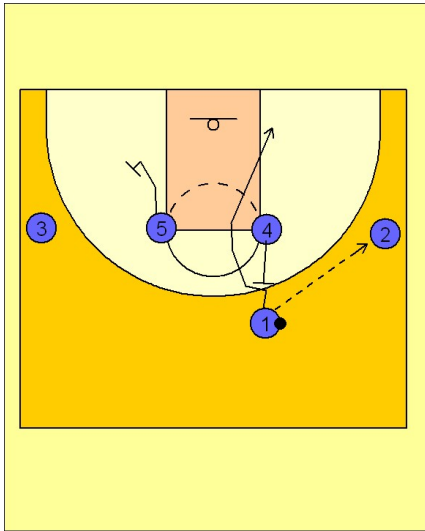


# Utah

## Set play vs. man (1)

1

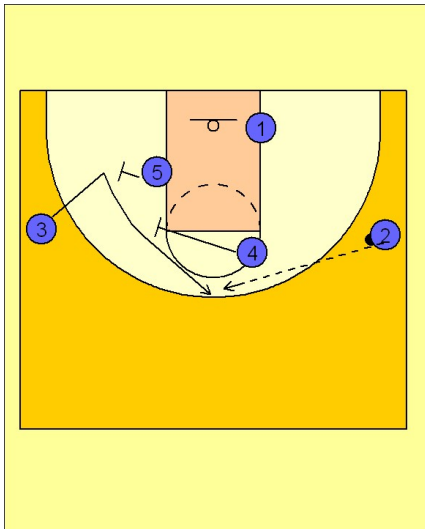


Utah Set Play vs. Man Defense

1 - 4 high alignment.

#1 hits #2 on the ball side wing. #4 sets a back screen for #1 who cuts to the ball side block. #5 moves down and sets up to set a screen for #3.

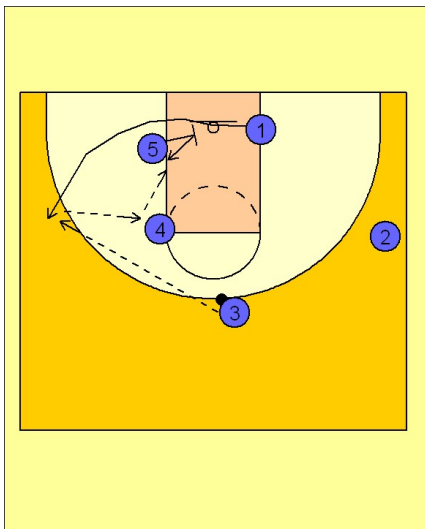
2



Utah Set Play vs. Man Defense

If #1 isn't open for the quick layup, #4 and #5 set a screen for #3 who is breaking down and then up and off the screens set by #4 and #5. #2 enters the ball on top to #3.

3



Utah Set Play vs. Man Defense

Once #3 receives the ball from #2, #5 sets a screen for #1 who breaks out to the wing looking for an open shot.

Once #1 receives the ball, #4 and #5 shape up on the block and the high post areas looking for an entry pass from #1.