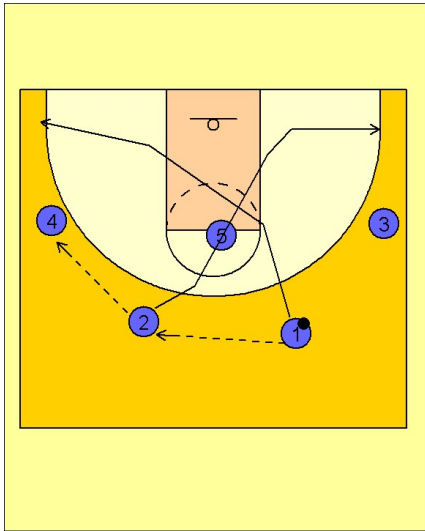


Utah

Set play vs. man (5)

1



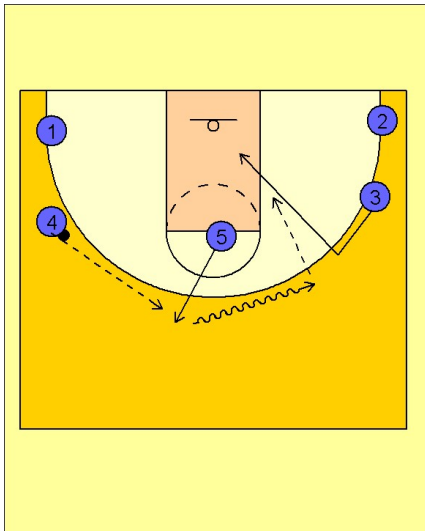
Utah Set Play vs. Man Defense

2 - 3 high set to begin.

#1 passes to #2 who then passes to #4 on the left wing.

After passing, #1 cuts first pass the post player at the freethrow line, down the lane and out to the ball side corner area. #2 cuts right after him down the lane and out to the opposite corner area.

2



Utah Set Play vs. Man Defense

#5 then steps out and receives the pass from #4. Once #5 has the ball, he begins to dribble at #3 who is moving up from the wing area towards the ball. #3 then makes a hard back door cut to the basket and receives the pass from #5 for the lay-up.