

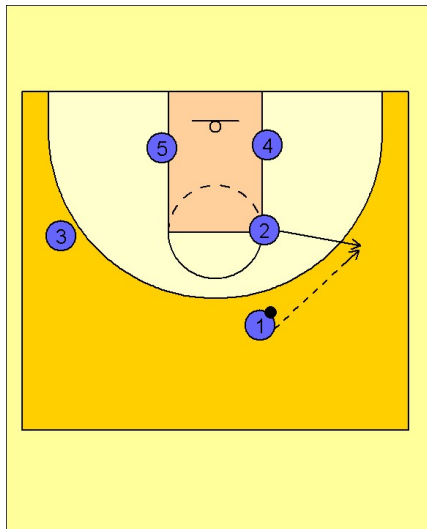
# Villanova

## Quick hitter (3)

1

Villanova Quick Hitter vs. Man Defense

#2 pops out and receives the entry pass from #1.



2

Villanova Quick Hitter vs. Man Defense

#4 then screens across and then pops up to the high post area. #2 looks to feed the low post. He can hit the high post player who will then look to make the high / low entry pass to #5 inside.

