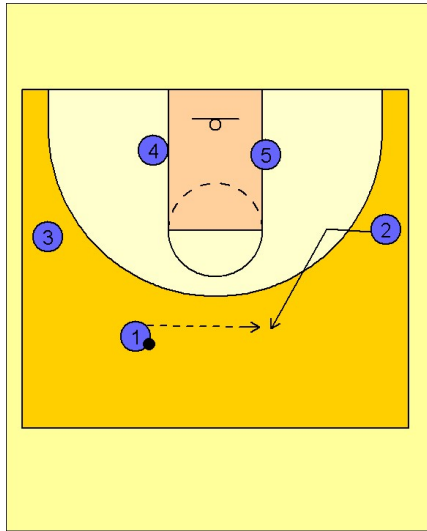


Villanova

Set play vs. man (1)

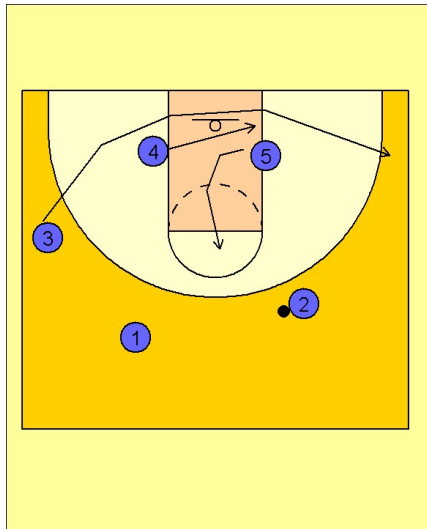
1



Villanova Set Play vs. Man Defense

#1 enters the ball to #2 on the top right area of the floor.

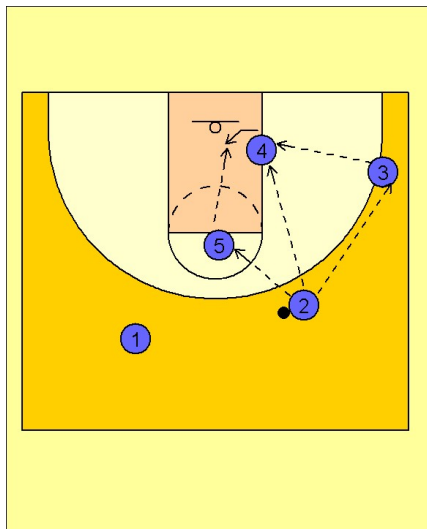
2



Villanova Set Play vs. Man Defense

#3 then cuts to the ball side corner while #4 cuts to the ball side low block. At the same time #5 is moving up to the high post area.

3



Villanova Set Play vs. Man Defense

#2 then looks to get the ball inside to #4 with the back side of the floor cleared out.