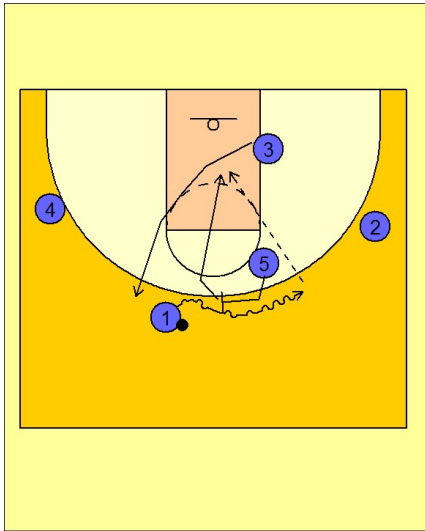


Villanova

Set play vs. zone (1)

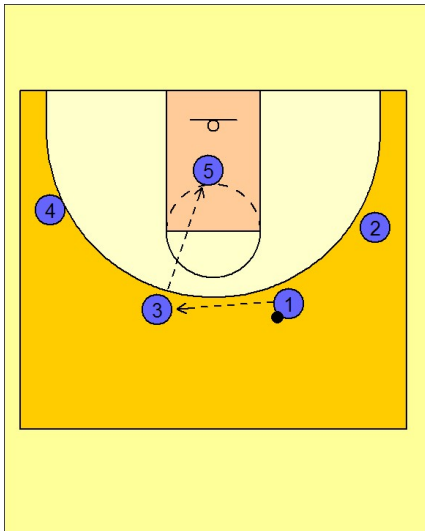
1



Villanova Set Play vs. Zone Defense

#5 screens the top defender nearest the ball as #1 takes the ball over the top of the screen. As #1 comes off the ball screen, #5 rolls to the basket while #3 breaks up to the top replacing the spot #1 just vacated on the dribble.

2



Villanova Set Play vs. Zone Defense

#3 can look for the shot if he is open or dump the ball into the post player #5.