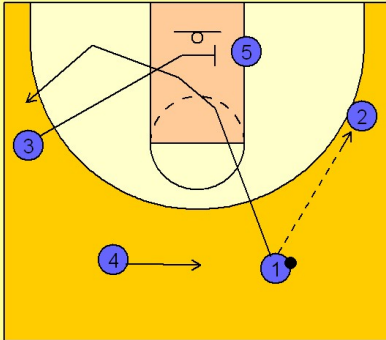


Wake forest

Early offense (1)

1

Wake Forest Early Offense



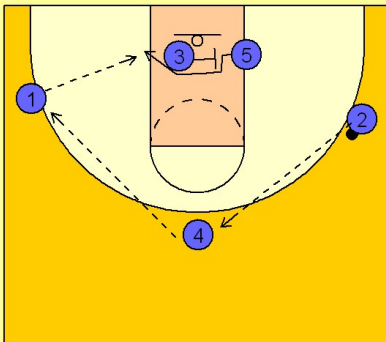
#1 hits #2 and cuts through the middle of the lane and out to the opposite wing.

#3 moves down and sets up for a screen on #5.

#4 slides over to the top for perimeter spacing.

2

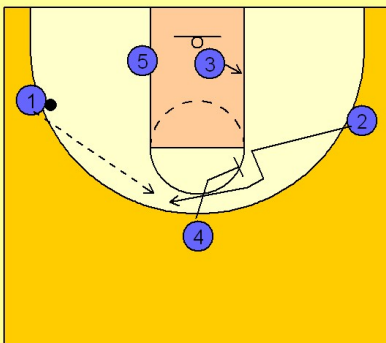
Wake Forest Early Offense



#2 reverses the ball to #4 on top who passes over to #1 on the wing. As this is happening, #3 is screening across for #5, looking to get him open on the block and a post entry pass from #1.

3

Wake Forest Early Offense



If #5 is not open, #4 screens away for #2 on the perimeter. #1 looks to hit #2 on top.

Wake forest

Early offense (1)

4

Wake Forest Early Offense

If #2 doesn't have a shot on top, #4 will continue down and screen for #3 on the block, trying to free him for an open jumper on the wing.

