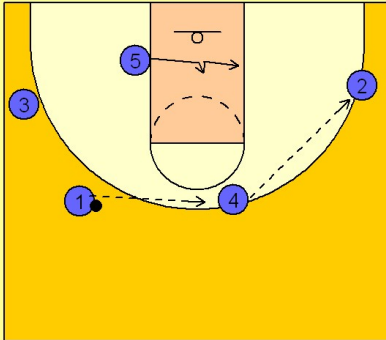


Wake forest

Early offense (2)

1

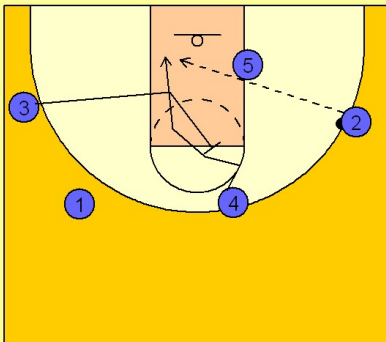
Wake Forest Early Offense



#1 passes to #4 on the top and then passes to #2 on the wing. #5 follows the ball across looking for a post pass first from #4 on top and then #2 on the wing.

2

Wake Forest Early Offense

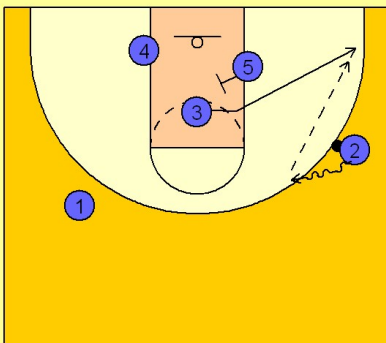


Once #2 receives the ball, #3 moves into the lane (ala North Carolina) and sets the back screen on #4's defender.

#2 can look to hit #4 with a lob pass if he is open.

3

Wake Forest Early Offense



If #4 is not open, #3, after screening for #4, cuts to the ball side corner off a screen from #5 looking for a pass from #2, who has put the ball on the floor towards the middle for better spacing on top.

#2 hits #3 in the wing / corner area.

Wake forest

Early offense (2)

4

Wake Forest Early Offense

Once #3 has it, #5 posts up looking for the entry pass from #3. #4 may flash high looking for the high / low entry pass into #5.

