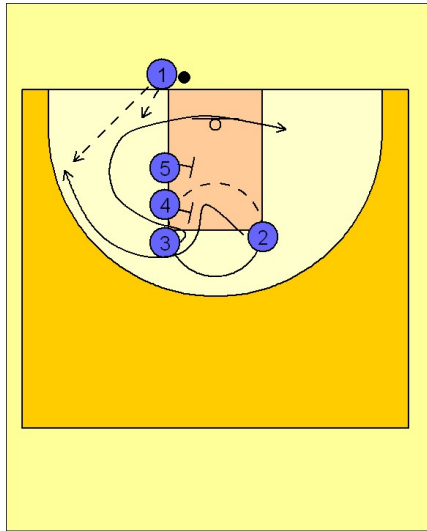


Wake forest

Ob under vs. man (3)

1



Wake Forest OB Under vs. Man Defense

#3, #4 and #5 stacked on the left lane line. #2 is stationed at the right FT line elbow.

#3 starts the play by cutting around #4 and #5 and curling towards the ball looking for the quick inbounds from #1. #2 follows behind #3 off the double screen from #4 and #5. #2 pops to the left wing area for the open jump shot.