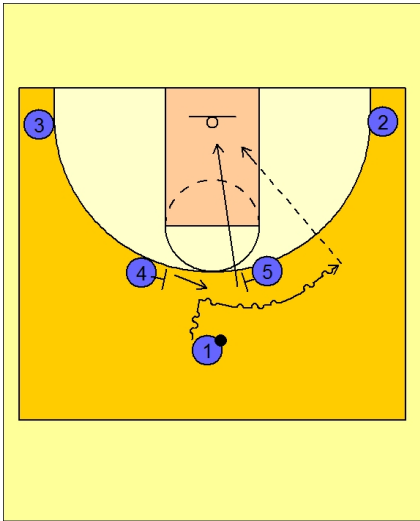




### Quick hitter (9)

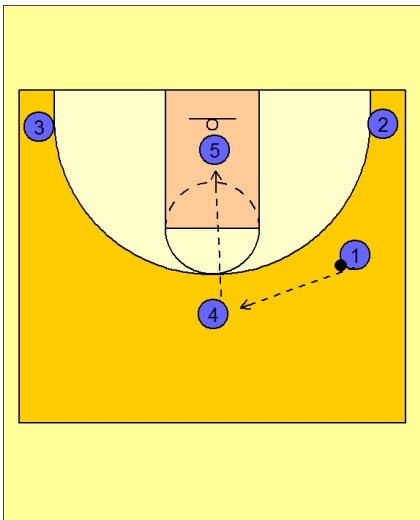


#### Wake Forest Quick Hitter vs. Man Defense

#4 and #5 setup for ball screens on top.

#1 drives off of either post player's screen.

The side he chooses, that post player will cut to the rim looking for the pass from #1.



#### Wake Forest Quick Hitter vs. Man Defense

If #5 does not receive the ball on the initial cut, #1 will reverse to #4 on top and look to feed #5 inside.