

Wake forest

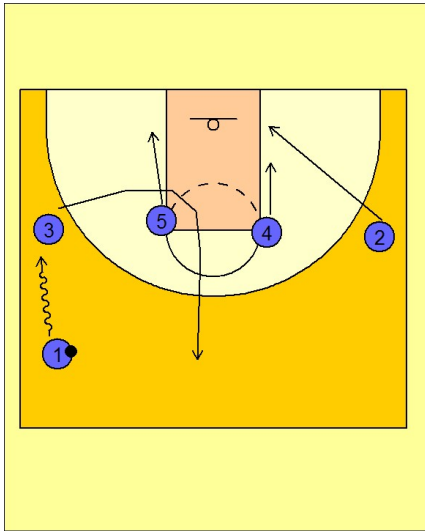
Quick hitter (4)

1

Wake Forest Quick Hitter vs. Man Defense

1 - 4 high set to begin.

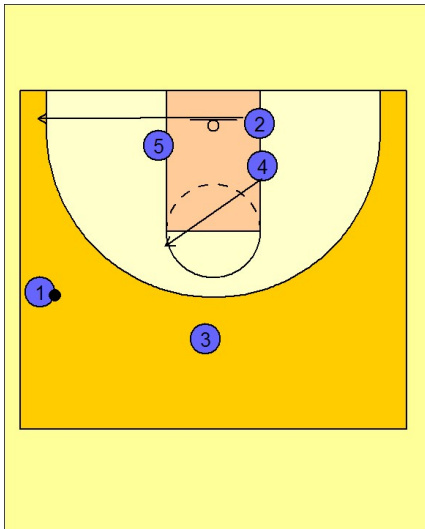
#1 drives at #3 on the left wing. #3 cuts in under #5 and out to the top of the key area. As #3 cuts out, #5 cuts down to the ball side low block area. #4 and #2 slide down to the opposite low block area.



2

Wake Forest Quick Hitter vs. Man Defense

As #1 gets to the left wing on the dribble, #2 breaks to the ball side wing area while #4 flashes to the high post ft line eblow area.



3

Wake Forest Quick Hitter vs. Man Defense

#1 will look to enter the ball to #4 in the high post who will then look to make the high / low pass to #5 on the low block. The defense has been cleared out by the movement of #4 and #2.

