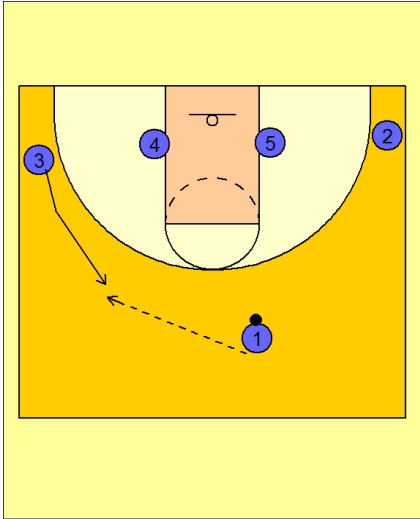




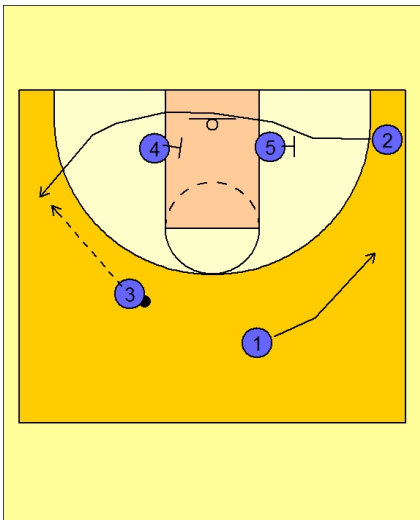
Set play vs. man (14)



Wake Forest Play vs. Man Defense

1 - 4 flat to start.

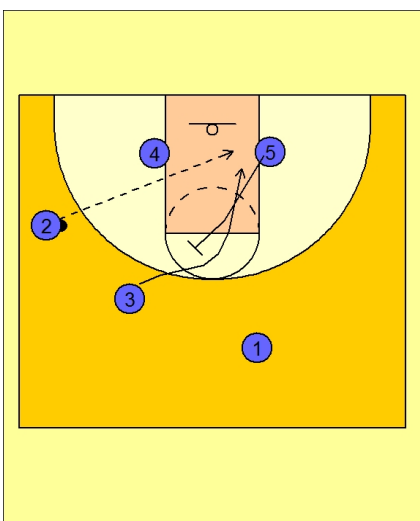
#3 cuts up to the high wing area. #1 passes to #3.



Wake Forest Play vs. Man Defense

Once #3 has the ball, #4 and #5 will set a double staggered screen for #2.

#3 looks to hit #2 on the left wing.



Wake Forest Play vs. Man Defense

If #2 does not have the shot, #5 sprints up when #2 catches and sets a back screen for #3.

#2 looks to make the lob pass to #3.