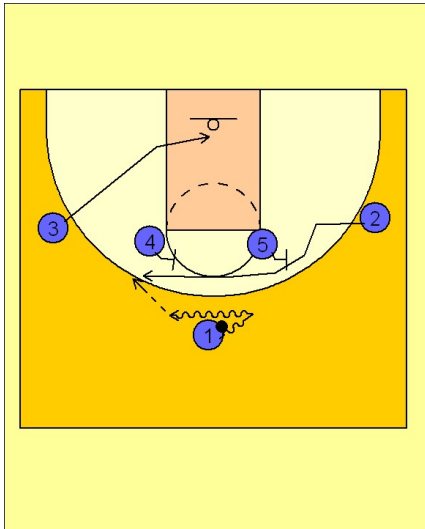


Wake forest

Set play vs. man (1)

1



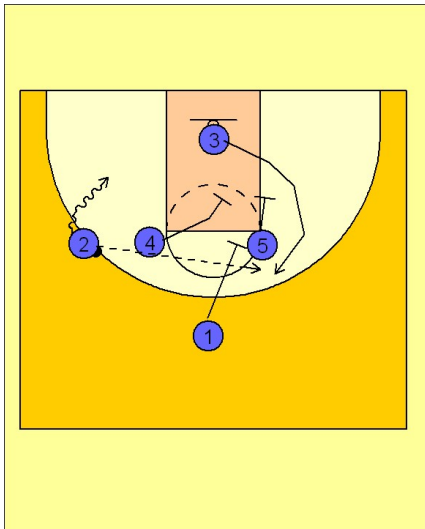
Wake Forest Set Play vs. Man

1 - 4 high across to begin.

#1 takes it on the dribble towards #2 on the right wing. When that happens, #2 comes across the top off of screens from both #5 and #4.

#1 takes the ball back in the direction #2 is cutting. #3 cuts down towards the middle of the lane, underneath the basket area.

2

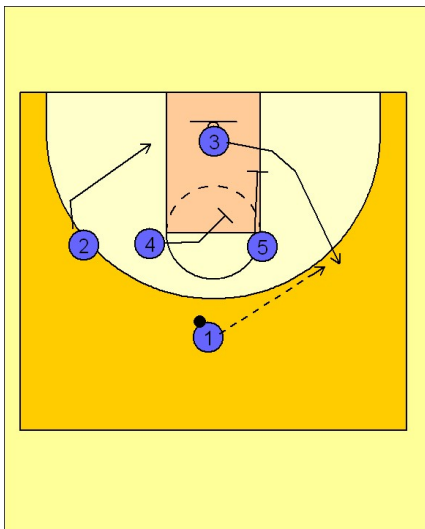


Wake Forest Set Play vs. Man

We will assume #2 was open and received the ball from #1 before we proceed.

Once #2 has the ball on the wing, #4 and #5 set a double down screen for #3 underneath the basket. If you wish, you may even add #1 to complete the triple staggered screen.

3



Wake Forest Set Play vs. Man

We will assume that #2 was not open in the beginning. If that is the case, #4 and #5 would still continue down and screen for #3 underneath the basket.

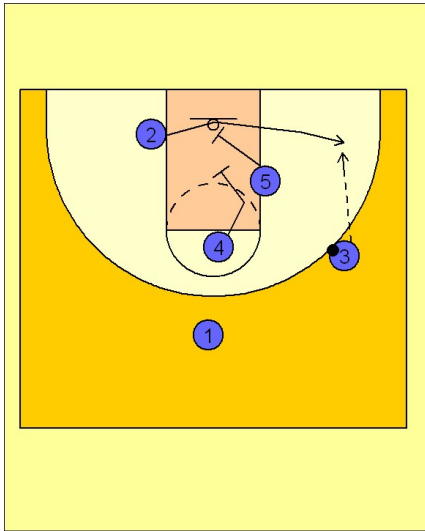
#2 would continue down to the low block area, ready to replace #3 underneath the basket.

#1 can hit #3 off the double staggered screen if he is open.

Wake forest

Set play vs. man (1)

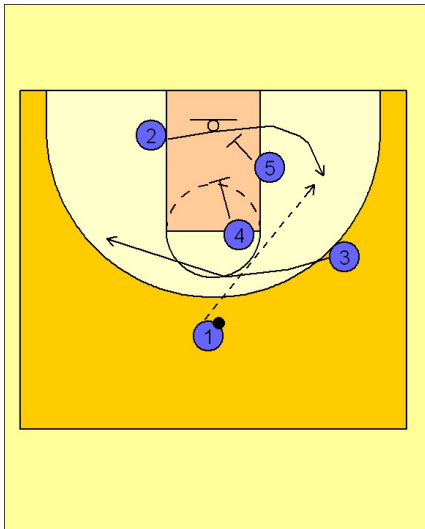
4



Wake Forest Set Play vs. Man

Let's assume #3 was open. When he receives the ball, #4 and #5 continue moving in that direction and find #2's defender for a double screen or a double staggered screen.

5



Wake Forest Set Play vs. Man

If #3 wasn't open on that play, he would continue cutting and curl around and out of the play while #4 and #5 would set the double or double staggered screen for #2.

Great continuous screen action from your post people trying to free your perimeter people for a jump shot.