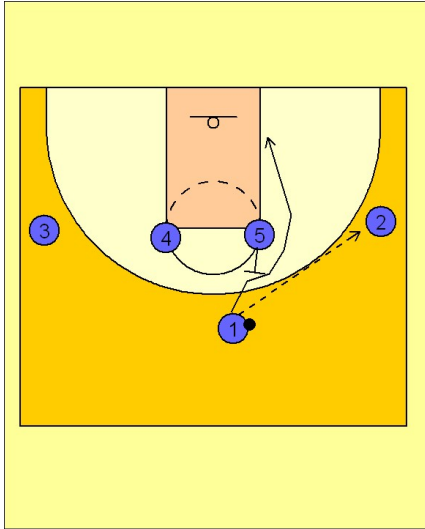


Wake forest

Set play vs. man (5)

1

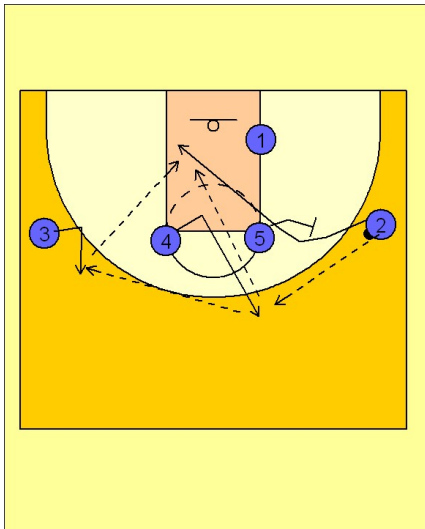


Wake Forest Set Play vs. Man

1 - 4 high to begin.

#1 enters to #2 on the wing. #5 sets a back screen for #1 to cut to the ball side low block.

2



Wake Forest Set Play vs. Man

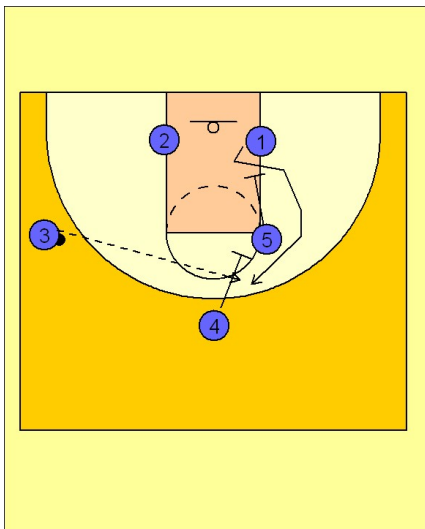
Once #2 has the ball, #4 makes a good v-cut and breaks to the top of the key area looking for the pass from #2.

Once #4 receives it he looks to pass over to #3 who has set his man up to receive the pass on the opposite wing.

Once #2 gets rid of the ball, #5 sets a back screen for #2 to cut through the lane to the opposite low block area.

#4 or #3 can hit the cutting #2 if he is open.

3



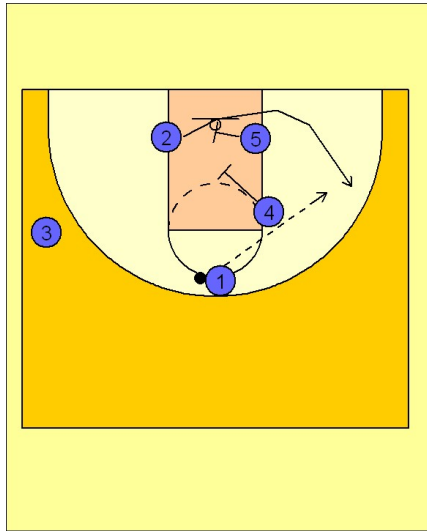
Wake Forest Set Play vs. Man

If #2 is not open, #5 and #4 set staggered down screens for #1 trying to free him on top for an open shot.

Wake forest

Set play vs. man (5)

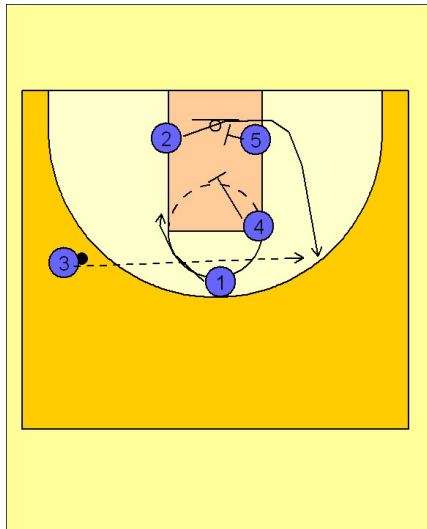
4



Wake Forest Set Play vs. Man

If #1 receives the ball from #3, #4 and #5 would continue the screening action and find #2's defender, trying to free him on the wing for an open jumper.

5



Wake Forest Set Play vs. Man

If #1 didn't get the ball on the initial double staggered screen from #4 and #5, #1 would then curl out of the play while #2 would come behind him off the double / double staggered screens from #4 and #5.