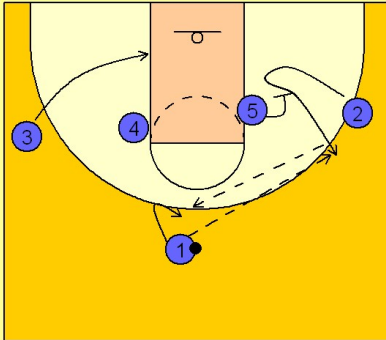


Wake forest

Set play vs. man (8)

1

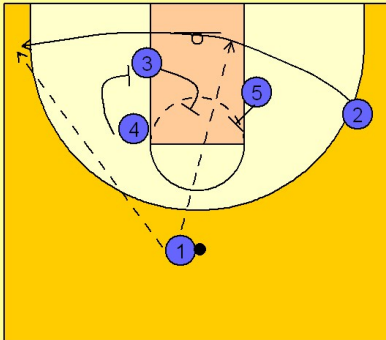
Wake Forest Set Play vs. Man



1 - 4 high to begin. #2 cuts into the lane while #5 spins around to set a screen for #2 to use to cut back out to the right wing area. #3 cuts down and into the lane area. #1 passes to #2 on the right wing takes a few steps away and cuts back to the top to receive the pass back from #2.

2

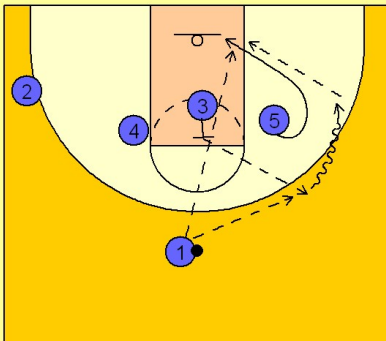
Wake Forest Set Play vs. Man



As soon as #2 passes to #1 on top, #3 moves in and sets a back screen on the closest defender and #5 does the same. #2 cuts across the lane out to the opposite wing / corner area. #4 will also screen for #2 as he breaks out to the left wing / corner area. #1 can look to hit #2 near the basket or on the left wing.

3

Wake Forest Set Play vs. Man



If #2 is not open, #5 spins to the basket after screening while #3 pops out to the wing to receive the potential pass from #1. #1 can look to lob to #5 first. Then, #1 can hit #3 stepping out who can take the ball down the right side on the dribble looking to post up #5.