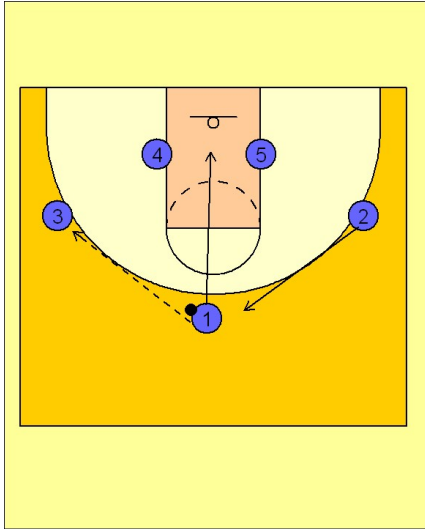


Wake forest

Set play vs. zone (1)

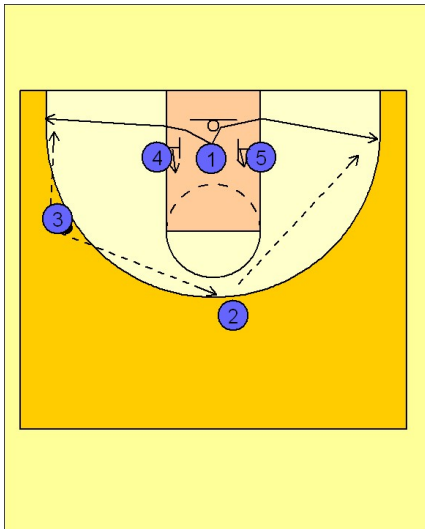
1



Wake Forest Set Play vs. Zone

#1 can hit either wing player on this play. Here #1 passes to #3 on the left wing and cuts down the middle of the lane. #2 replaces #1 on top.

2



Wake Forest Set Play vs. Zone

Once #1 gets down underneath the basket, #4 and #5 screen in for #1. #1 can come out either side off the screens from #4 or #5. If he goes out the opposite side of the ball, #3 has to quickly reverse the ball to #2 on top.

#4 and #5 are immediately ducking in and sealing in the post after screening.