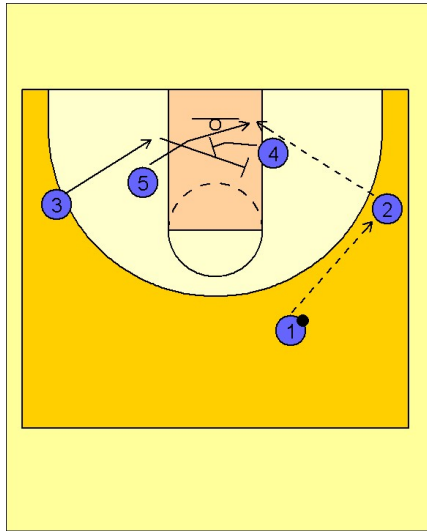


# Wake forest

## Set play vs. zone (2)

1



Wake Forest Set Play vs. Zone

#3 moves down to the left low block with #5. The first to move is #3 across the lane screening the post defender near the low right block. Right as the ball is being passed to #2 on the right wing, #4 is setting a screen on the middle or back side zone defender. #5 breaks into the low post spot opening created by #4 and #3's screening action.