

Wake forest

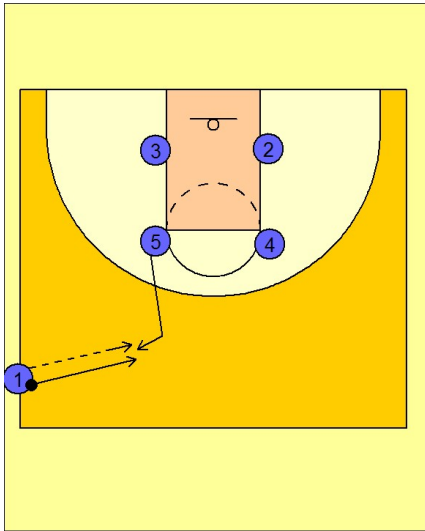
Side ob (1)

1

Wake Forest Side OB vs. Man

Box set to begin.

#5 steps out to receive the entry pass from #1. #1 quickly follows his pass and gets the ball back from #5.

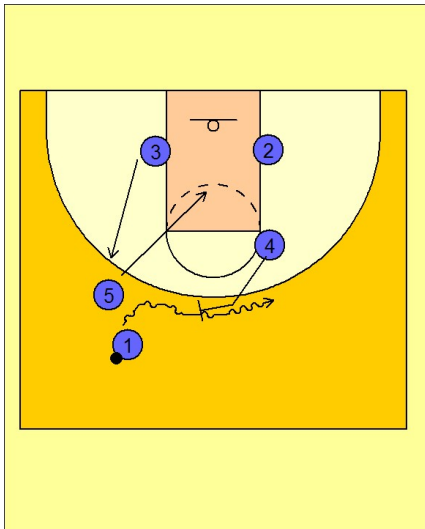


2

Wake Forest Side OB vs. Man

Wake Forest has two options from this alignment. Let's look at the first option.

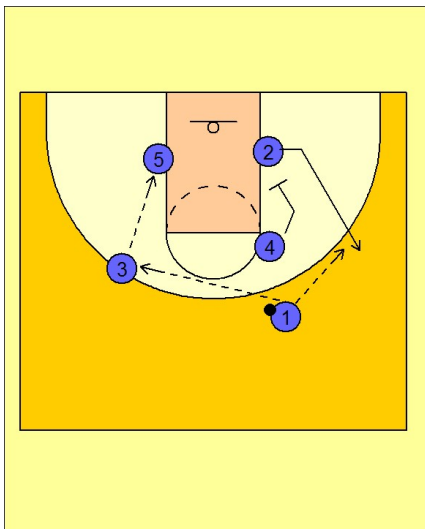
#4 steps out and ball screens for #1. #5 moves into the post area while #3 moves out to the perimeter opposite the ball.



3

Wake Forest Side OB vs. Man

Once #1 comes over the screen from #4, he can look to hit #3 on the opposite wing / top area and then a post entry pass from #3 to #5. Or he can hit #2 popping out to the right wing off a down screen from #4.

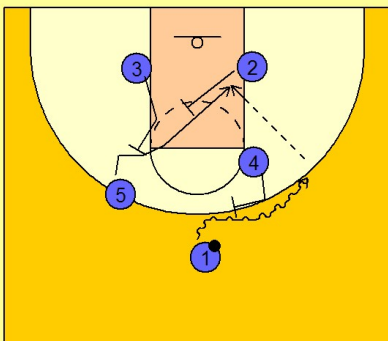


Wake forest

Side ob (1)

4

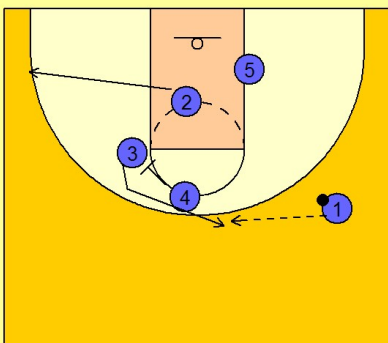
Wake Forest Side OB vs. Man



The other option Wake Forest will use on this play is for #3 and #2 to set a double staggered back screen for #5 coming to the ball side low block area. #4 sets the same ball screen and now #1 will look to enter the ball to #5 in the low block as he comes off the ball screen.

5

Wake Forest Side OB vs. Man



If #5 is not open, #4 will set a down screen for #3 trying to free him for an open jumper on top.