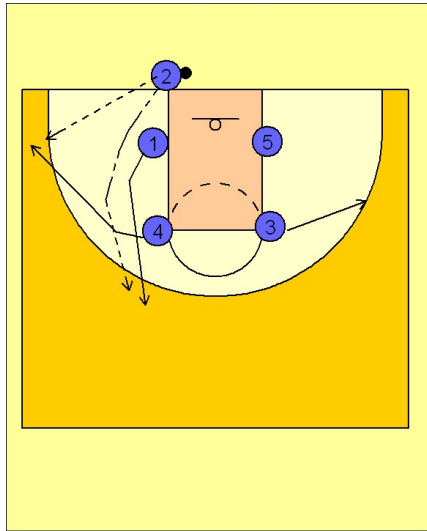


Wisconsin

Ob under vs. man (2)

1

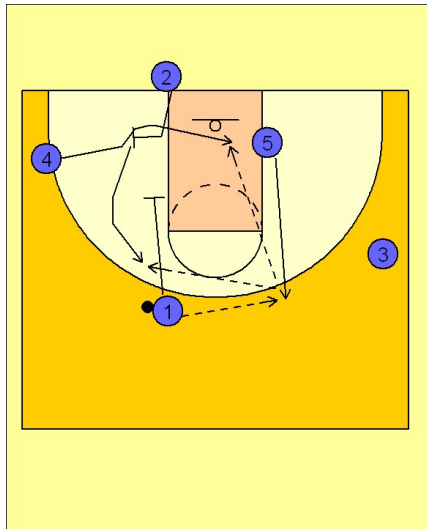


Wisconsin OB Under vs. Man Defense

Box set to begin.

#4 breaks to the ball side corner while #1 breaks straight out. #2 can either pass to #4 who will pass to #1 on top or #2 will pass the ball straight out to #1. #3 breaks out to the opposite wing area.

2



Wisconsin OB Under vs. Man Defense

Once #1 has the ball he passes to #5 who has popped out to the perimeter. Upon receiving the ball, #5 will look for #4 cutting across the middle of a back screen from #2, who has stepped in bounds to set the screen. #5 may also pass to #2 on the left side of the floor coming off the down screen from #1. Wisconsin is now into their "swing offense" alignments and will attack accordingly.