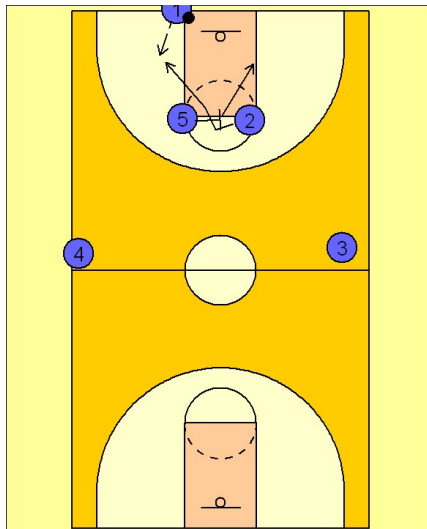


Wisconsin

Press breaker (1)

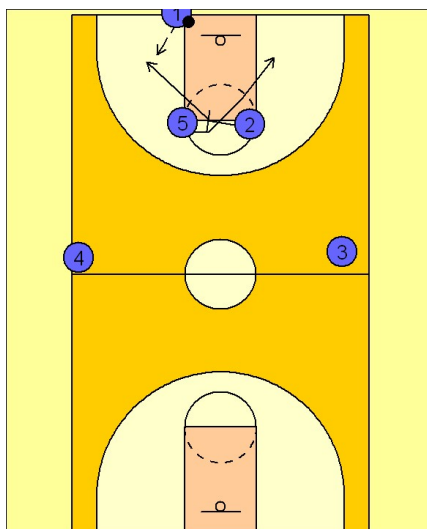


Wisconsin Press Breaker

1

Nothing really new to report here other than Wisconsin breaks the press like the majority of teams in the country, using a stationary 2 - 1 - 2 attack with either a good ballhandler or receiver in the middle.

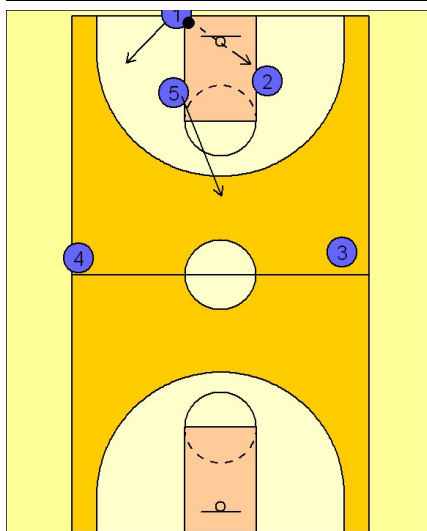
Here we see #5 and #2 working to get open for the entry pass. Usually #2 will receive it so they will both work to make that happen. #5 could screen for #2 then break opposite the ball. #1 could then enter to #2.



Wisconsin Press Breaker

2

#2 could back screen for #5 and then break towards the ball for the entry pass. #2 could also just break straight to the out of bounds line to get the ball in from #1.



Wisconsin Press Breaker

3

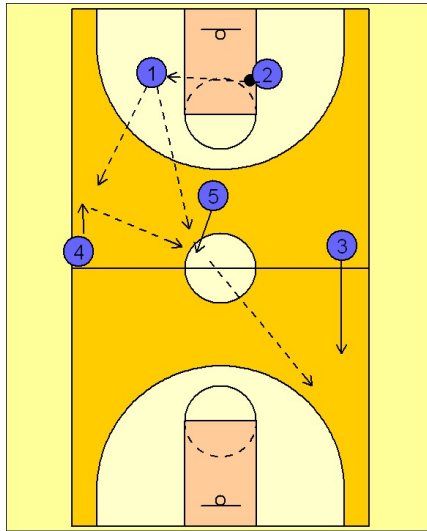
Once #2 has the ball, #5 moves back into the middle and becomes an immediate receiver.

#1 steps in opposite the ball and becomes the reversal man for #2.

Wisconsin

Press breaker (1)

4



Wisconsin Press Breaker

Here we see #2 passing it over to #1. #5 stays in the middle and looks for the entry pass either from #1 or after #1 throws the ball up the sideline. In any event, #5 will turn and look to attack up the floor either on the dribble or pass after receiving the ball.