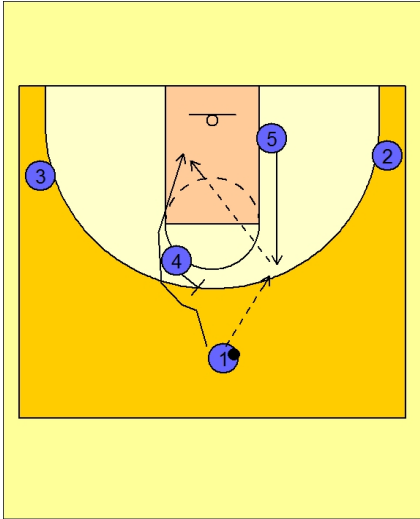


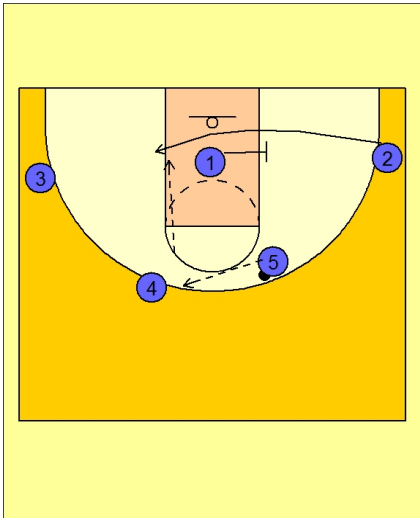


Set play vs. man (6)



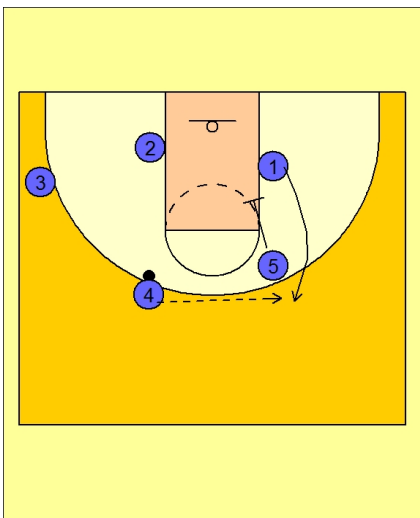
Wisconsin Set Play vs. Man Defense

- #5 cuts up to the top to receive the entry pass from #1.
- #1 then cuts off the back screen from #4.
- #5 will look to hit #1 if he is open.



Wisconsin Set Play vs. Man Defense

- If #1 is not open, #5 passes to #4 on top.
- #2 now cuts under the rim and gets a screen from #1.
- #4 looks inside to #2.



Wisconsin Set Play vs. Man Defense

- #5 now sets a down screen for the screener, #1.
- #4 hits #1 on top.



This play is basically an entry into the famous "Wheel" offense.