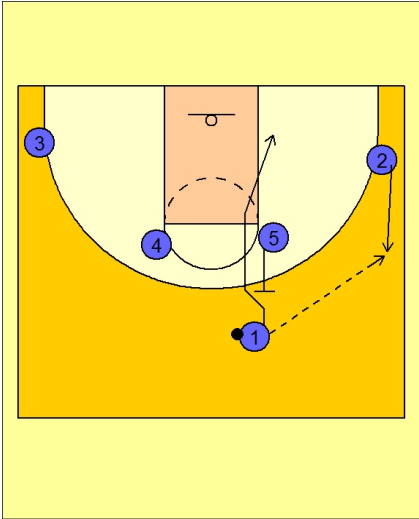




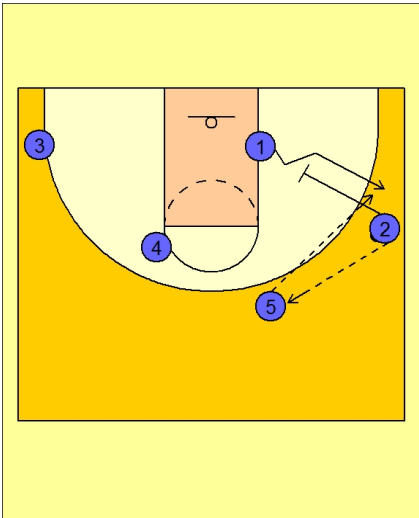
Set play vs. man (7)



Wisconsin Set Play vs. Man Defense

#1 passes to #2 on the right wing.

#5 sets a back screen and #1 executes a UCLA cut to the low block area.

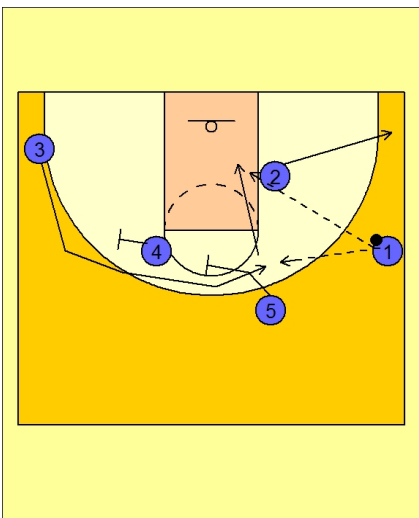


Wisconsin Set Play vs. Man Defense

#2 passes to #5 stepping out after back screening.

#2 now down screens for #1.

#5 passes to #1 on the right wing.



Wisconsin Set Play vs. Man Defense

#2 breaks out to the ball side corner.

#5 and #4 set a double staggered screen on top for #3.

#3 can look for the open 3 point shot. If his defender tries to trail him over the top of the screens, #3 can look to curl off the screen and cut to the basket for the layup.