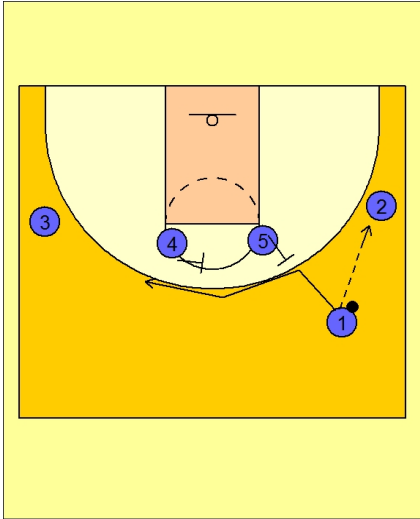




**Set play vs. man (8)**

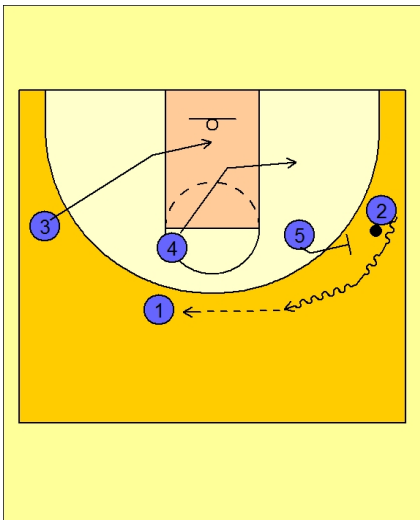


**Wisconsin Set Play vs. Man Defense**

1-4 High set to begin.

#1 passes to #2 on the right wing.

#5 looks to set a back screen for #1, but instead #1 uses the back screen from #4.



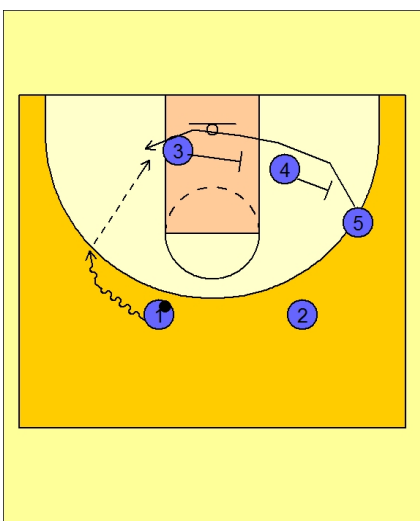
**Wisconsin Set Play vs. Man Defense**

#2 gets a ball screen from #5.

#2 and #5 execute a pick and roll on the right wing.

#3 and #4 cut into the lane.

#2 drives off the ball screen and passes to #1 on top.



**Wisconsin Set Play vs. Man Defense**

#5 rolls off the ball screen and uses a double staggered screen from #4 and #3.

#1 looks to post up #5 on the left low block area.