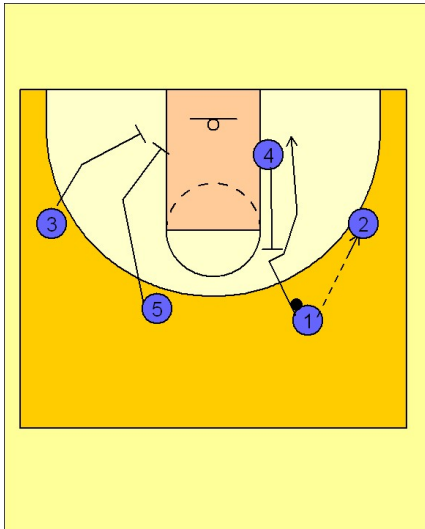


Wisconsin

Set play vs. man (1)

1



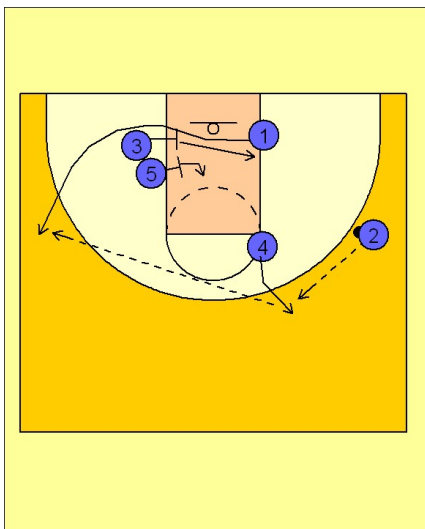
Wisconsin Set Play vs. Man

This is more of a different entry to their half court offense (The Swing Offense) than it is a set play.

#1 looks to hit #2 on the wing. #4 back screens for #1 bringing him to the ball side block.

#3 and #5 set up on the block away from the ball for a double screen.

2



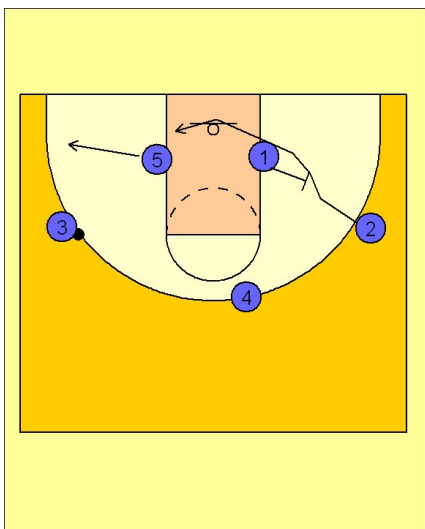
Wisconsin Set Play vs. Man

#4 steps out after the back screen. #2 reverses the ball to #4.

#4 then looks for #1 coming off the double screen on the other side from #3 and #5.

After screening, #3 cuts across the lane while #5 ducks into the post.

3



Wisconsin Set Play vs. Man

From here they will get into their "Swing Offense" movements.

#5 steps out while #1 back screens for #2 on the opposite wing, bringing him to the ball side block.